

SAMPLE QUESTION PAPER
ENGLISH CORE (Code No. 301)
CLASS-XII-(2024-25)

Time allowed: 3 Hrs.

Maximum Marks: 80

General Instructions

Read the following instructions very carefully and strictly follow them:

- i. This question paper has 13 questions. All questions are compulsory.*
- ii. This question paper contains three sections:
Section A: Reading Skills,
Section B: Creative Writing Skills
Section C: Literature.*
- iii. Attempt all questions based on specific instructions for each part. Write the correct question number and part thereof in your answer sheet.*
- iv. Separate instructions are given with each question/part, wherever necessary.*
- v. Adhere to the prescribed word limit while answering the questions.*

SECTION A
READING SKILLS

(22 marks)

1. Read the following passage carefully:

12

- (1) In a room filled with people, each face illuminated by the soft glow of their smartphones, moments drift away like autumn leaves in the wind. The constant hum of notifications fills the air, punctuating conversations like an incessant drumbeat. Every vibration or ping sends fingers flying to screens, a response ingrained by years of digital conditioning. The once-reliable tick-tock of analog timepieces has been overshadowed by the constant flicker of notifications on the wrist watch, blurring the boundaries between the virtual and the real.
- (2) Anxiety gnaws at the edges of consciousness when the phone is out of reach, a phantom limb syndrome that leaves us feeling incomplete without our digital appendage. The fear of missing out permeates every moment spent away from the screen, driving us to constantly check for updates and notifications.
- (3) Thumbs move with the speed and precision of skillful pianists, tapping out messages and scrolling through feeds with practiced ease. Yet amidst the flurry of activity, the true rhythm of life remains unheard, drowned out by the dissonance of digital noise. The weight of constant connectivity forms a hunch upon our shoulders, a physical manifestation of the burden we carry in an age of information overload. Our minds are perpetually on high alert, scanning for the next wave of excitement that comes with each like, share, or comment.
- (4) And yet, for all our efforts to stay connected, we find ourselves increasingly isolated in a sea of digital faces. Genuine connections are fleeting, drowned out by the constant clamour for attention. In the pursuit of digital validation, we sacrifice the wealth of lived experience, trading meaningful moments for fleeting glimpses of connection. The true essence of life lies not in the pixels on a screen, but in the depth of human connection and the richness of shared experiences

(5) As we navigate this brave new world of constant connectivity, let us not forget the value of presence and the beauty of being fully engaged in the moments that matter most. For in the end, it is not the number of likes or followers that defines us, but the depth of our connections and the richness of our experiences that truly matter.

Created for Academic Usage / 421 words

Answer the following questions, based on the passage above.

- I. According to paragraph 1, what effect do smartphone notifications have on the people in the room? 1
- II. How does the author use the metaphor of 'autumn leaves in the wind' to interpret the passing of time in the setting described? 1
- III. Read and complete the following sentence suitably. 1
The phrase '*a phantom limb syndrome that leaves us feeling incomplete without our digital appendage*' suggests that just as an amputee might feel pain in a limb they no longer have, individuals can feel a sense of loss or incompleteness when they are separated from their digital devices.
Choose the correct response from the two options to complete the sentence.
The concern this analogy points towards is about _____.
- A. a deep (psychological) dependence on technology for a sense of wholeness or connection
B. excessive physical damage that can be caused due to constant use of digital devices
- IV. Complete the following suitably with ONE advantage, with reference to paragraph 2. Designating specific hours each day to intentionally avoid checking digital devices can help _____. 1
- V. Why does the writer refer to digital noise as 'dissonance' in paragraph 3? 1
Because-
- A. It creates a jarring and chaotic environment that disrupts focus.
B. It contributes to a sense of overload, overwhelming the senses.
C. It interferes with our ability to engage with meaningful aspects of our life.
D. It induces stress by interrupting with regular updates about the device.
- VI. Provide ONE textual evidence with reference to paragraph 3, to prove the following: 1
The need to be perpetually engaged with digital notifications manifests in the body.
- VII. In the line, 'Yet amidst the flurry of activity, the true rhythm of life remains unheard...', what does the phrase 'true rhythm of life' refer to? (Paragraphs 3-4) 2
- VIII. Complete the analogy with ONE word from paragraph 4. 1
whisper: quietly: _____: loudly
- A. validation
B. fleeting
C. essence
D. clamour

- IX Why is it fair to say that the statement ‘And yet, for all our efforts to stay connected, we find ourselves increasingly isolated in a sea of digital faces’ from paragraph 4, employs irony? 1
- A. Despite the intent to connect more effectively, the result is the opposite.
 B. The writer mocks the seriousness with which people approach digital connectivity.
 C. The writer exaggerates the effects of digital connectivity to highlight its impact.
 D. Use of ‘a sea of digital faces’ to symbolically represent digital platforms.
- X Assess the potential challenges OR benefits of relying on survey outcomes for designing health interventions, as outlined in paragraph 5. 2

2. Read the following carefully. 10

- (1) Introduction:
 In the hasty lifestyle of today’s world, the choice of snacks can greatly impact one's health and well-being. This case study aims to analyse the preference for seasonal fruits compared to packaged snacks among different age groups and the implications for overall health.
- (2) Methodology:
 A survey was conducted among individuals across various age groups, ranging from children to seniors, to determine their snacking preferences. Participants were asked to indicate their preferred snack choices and provide reasons for their preferences. The data was then analysed to identify trends and patterns among different age demographics.
- (3) Survey Examination:
 The survey encompassed a comprehensive examination of snacking habits, including not only preferred snack choices but also delving into the underlying motivations and influences guiding these choices. Beyond mere preference, participants were encouraged to articulate the reasons behind their selections, providing invaluable insights into the multifaceted nature of snacking behavior.
- (4) Results:
 The survey results revealed interesting insights into snacking preferences among different age groups:

Age-group	%	Preferred snack	Reasons for preference
Children	77	Seasonal fruits	Taste, Health benefits, Parental guidance
Teenagers	65	Packaged snacks	Convenience, Taste, Peer influence
Young adults	52	seasonal fruits and packaged snacks	Transitional lifestyle(college, beginning careers, and establishing independence), Health consciousness, Convenience
Middle-aged	83	Seasonal fruits	Freshness, Nutrition, Health consciousness
Elderly	90	Seasonal fruits	Health benefits, Digestive ease

- (5) Implications for Interventions:
 By discerning the diverse preferences among different age groups, policymakers and health practitioners can tailor interventions to address specific demographic needs. For instance, targeting educational campaigns towards parents could empower them to instill healthy eating habits in their children from an early age. Concurrently, efforts to mitigate the

influence of advertising and peer pressure on teenagers could involve regulatory measures and educational initiatives aimed at promoting critical thinking and informed decision-making. Furthermore, the prominence of seasonal fruits as a preferred snack choice among middle-aged adults and senior's points towards the importance of promoting access to fresh produce and nutritional education across all age demographics.

(6) Conclusion:

The survey outcomes serve as a roadmap for designing targeted interventions that not only cater to diverse demographic needs but also nurture a culture of health and well-being. By harnessing the insights gleaned from this study, stakeholders can collaboratively work towards building healthier communities and promoting sustainable practices for generations to come.

Created for Academic Usage / 315 words

Answer the following questions, based on given passage.

- I. Complete the following suitably. 1

In the introduction, the researcher links a hasty lifestyle with the choice of snacks in the study to highlight_____.

- II. What would the following be classified as? 1

To examine snacking preferences across various age groups in detail, and assess health implications.

Select the appropriate response.

- A. Primary purpose B. Secondary objective
C. Method of analysis D. Research outcome

- III. Give **two** points to support why it is likely that fresh fruits were given as an option to the survey participants to choose from in the study on snacking preferences. 2

- IV. Paragraph 3 includes words – 'motivations' and 'influences.' 1

Classify the following sentences as 'influence' or 'motivation':

Sentence 1: Peer pressure leads teenagers to prefer packaged snacks over healthier options.

Sentence 2: The drive to maintain health as one ages makes middle-aged adults to choose seasonal fruits.

- V. **Read the following:** 1

Seema regularly enjoys snacking on chips and cool drinks while watching movies. Mohan, her neighbour, prefers to snack on oranges and also some nuts occasionally. Arindam, who lives across, often tends to eat a mix of carrot sticks and instant noodles, in between meals.

Select the option that identifies the correct demographic Seema, Mohan and Arindam belong to.

- A. Seema – young adult; Mohan – teenager; Arindam -middle-age
B. Seema - teenager; Mohan – middle-age; Arindam -child
C. Seema – young adult; Mohan – child; Arindam - teenager
D. Seema - teenager; Mohan – elderly; Arindam -young adult

- VI. Although children, middle-aged, and elderly groups all prefer seasonal fruits, why is the preference percentage highest among the elderly? 1
- VII. Analyse how targeted interventions based on the diverse snacking preferences of different age groups can lead to improved health outcomes. (Paragraph 5) 2
- VIII. What is the ultimate goal for stakeholders, based on the insights from the study? 1
- A. Increase profitability through enhanced snack marketing
 - B. Building healthier communities
 - C. Reducing the cost of healthcare services
 - D. Expanding the range of available snack product

SECTION B
CREATIVE WRITING SKILLS (18 marks)

3. Attempt **any one** of the two, (A) or (B), in about 50 words **1x4=4**
- A.** Your school is planning to conduct an inter-class seminar on the topic–The Importance of Mental Health–to create awareness in adolescents. As the head of the organising committee, write a notice to inform all students about the seminar and invite registrations from classes XI-XII. Include other necessary details. Put your notice in a box.

OR

- B.** Your school is organising an inter-House webinar on enhancing coding skills, As the President of the Computer Club, write a notice to inform all House members from IX-XII about the webinar and specify the number of registrations invited per House. Include other necessary details. Put your notice in a box.
4. Attempt **any one** of the two, (A) or (B), in about 50 words. **1x4=4**

- A.** Draft an invitation in not more than 50 words from Vani Gopalan, Chief Project Officer of an NGO, for the launch of the 'Each One Teach One' programme, addressed to school Principals and Coordinators. Mention a compelling highlight of the programme along with other necessary details

OR

- B.** An invitation had been issued by Mr. Cherian, the HR Head of your company inviting you for the company picnic. As Joseph Vijayan, Asst. Manager, Operations, draft a reply in not more than 50 words, consenting to attend.
5. Attempt **any one** of the two, (A) or (B), in 120 150 words **1x5=5**
- A.** Financial literacy is increasingly recognised as a crucial 21st-century skill for young individuals. Write a letter to the editor of a local daily discussing the benefits of providing financial literacy education to children. Also, suggest effective ways to raise awareness about the importance of this education among parents and guardians. You may use some of the given cues along with your own ideas to draft the letter. You are a counsellor, Chitra Mahapatra from Puri, Odisha.

- What are the long-term benefits of learning financial independence from a young age?
- Why is understanding the power of finances beneficial for young learners?
- Why skills learned during childhood tend to have a lasting impact.

OR

- B.** You are Maya Syiem from Shillong. You read the given advertisement and wish to apply for the post advertised. Write this job application along with your bio-data.

Join our Creative Team!
A renowned publishing house in Shillong
–A NEW WORLD–
is seeking a talented illustrator for children's books.
Creative individuals with a passion for storytelling through art, welcome.
Experience, not mandatory.
Team players with degree/ diploma in Fine Arts/ Graphic Design may apply with 5 samples
from portfolio illustrating a variety of work.
Write to the Project Lead, 23-C Rosewood Lane, Shillong-793005

Attempt **any one** of the two, (A) or (B), in 120 150 words

1x5=5

- 6.**
- A.** In an era of rapid globalisation and technological advancement, the preservation of cultural heritage remains a vital challenge, particularly for the youth. India continues to navigate the complexities of maintaining tradition alongside modernity. Write an article exploring the role of cultural heritage in shaping the identities of today's Indian youth. Provide examples to illustrate your points wherever necessary. You may use some of the given cues along with your own ideas. You are Arti Nirula of Class XII-A.

- How have global interactions and technologies influenced or changed these traditional practices among today's youth?
- What are the benefits of preserving cultural heritage for young people? How does it contribute to their sense of identity and community?
- Suggest ways in which young people and institutions can work together to ensure the preservation of cultural heritage.

OR

- B.** You are Hina Aziz, student of Class XII-D and a member of the school magazine editorial board. Write a comprehensive report detailing the activities undertaken by students as part of the celebrations on Yoga Day. Include descriptions of the events, participation details, and the overall impact of these activities on the school community. You may organise your report by following - Who - What – When – Where – Why – How

SECTION C

7. Read the following extracts and answer the questions for any one of the given two-A or B 1x6=6

A Those who prepare green wars,
wars with gas, wars with fire,
victory with no survivors,
would put on clean clothes
and walk about with their brothers
in the shade, doing nothing.

(poem - *Keeping Quiet*)

- I. What is a common outcome of all the wars described?
- II. What does the imagery of 'walking about with their brothers in the shade' primarily represent?
 - A. The readiness for further conflicts.
 - B. A return to normal activities post-conflict.
 - C. A moment of unity and peaceful reflection.
 - D. The physical environment of a typical war zone.
- III. Complete the following suitably.
The putting on of 'clean clothes' by the warmongers, symbolises_____.
- IV. Select the correct option from those given in brackets, to fill in the blank.

The excerpt tells us that the speaker _____ (condemns / glorifies) the destructive nature of modern warfare.
- V. Read the assertion and the reason below, with reference to the given extract.
Assertion: The poet advocates for 'doing nothing' as a way to prevent the devastation of war.
Reason: 'Doing nothing' refers to a time for stopping any action for a few moments.

Choose the correct option regarding their relationship.
 - A. Both the assertion and the reason are true, and the reason is the correct explanation of the assertion.
 - B. Both the assertion and the reason are true, but the reason is not the correct explanation of the assertion.
 - C. The assertion is true, but the reason is false.
 - D. The assertion is false, but the reason is true.
- VI. How can the message in the excerpt, about the outcome of wars be applied to promote peace?

OR

B While greedy good-doers, beneficent beasts of prey,
Swarm over their lives enforcing benefits

That are calculated to soothe them out of their wits,
And by teaching them how to sleep they sleep all day,
Destroy their sleeping at night the ancient way.

(poem-The Roadside Stand)

- I Select the phrase that suggests the following:
The so-called aids are not offered out of genuine care or consent but are imposed in a controlling and perhaps unwelcome manner.
- II What does the imagery of 'swarm' NOT represent in the given extract?
- | | |
|-------------------------|--------------------------------|
| A. Coordinated help | B. Overwhelming force |
| C. Discomfort and chaos | D. Neglect of individual needs |

- III Complete the following suitably.

In the line, 'destroy their sleeping at night the ancient way,' the phrase 'the ancient way' refers to_____.

- IV. Select the correct option from those given in brackets, to fill in the blank.

The poet has used phrases like 'greedy good-doers' and 'beneficent beasts of prey' to illustrate the _____ (irony/satire) in the situation where those claiming to help the rural poor actually impose self-serving and detrimental actions on them.

- V. Read the assertion and the reason below, with reference to the given extract.

Assertion: The poet criticizes the way the rural poor are treated by benefactors, suggesting it instills ambition.

Reason: The interventions are overwhelmingly calming and lead to a loss of critical thinking among the rural poor.

Choose the correct option regarding their relationship:

- A. Both the assertion and the reason are true, and the reason is the correct explanation of the assertion.
- B. Both the assertion and the reason are true, but the reason is not the correct explanation of the assertion.
- C. The assertion is true, but the reason is false.
- D. The assertion is false, but the reason is true.
- VI. State in one sentence, what cautionary advice your address to the rural poor from the extract, is most likely to include.

- 8. Read the following extracts and answer the questions for any one of the given two, (A) or (B) 4x1=4**

- A. To visit Antarctica now is to be a part of that history; to get a grasp of where we've come from and where we could possibly be heading. It's to understand the significance of Cordilleran folds and pre-Cambrian granite shields; ozone and carbon; evolution and extinction. When you think about all that can happen in a million years, it can get pretty mind-boggling. Imagine: India pushing northwards, jamming against Asia to buckle its crust and form the Himalayas; South America drifting off to join North America, opening up the Drake Passage to create a cold circumpolar current, keeping Antarctica frigid, desolate, and at the bottom of the world. (Journey to the End of the Earth)

- I. Complete the following suitably.

The passage suggests that visiting Antarctica offers insight into geological processes and

Earth's history by _____.

- II. How does the author imply the role of geological knowledge in understanding the Earth's past and potential future changes?
- III. The writer says, 'When you think about all that can happen in a million years, it can get pretty mind-boggling.'
What is the most likely impact on the writer?
 - A. Feels overwhelmed by the vastness of geological time scales.
 - B. Is uneasy about the rapid pace of geological changes.
 - C. Feels indifferent towards geological phenomena.
 - D. Is surprised by the lack of significant geological events over a million years.
- IV. How might understanding the geological processes mentioned in the passage help scientists in predicting and mitigating future environmental changes, particularly in polar regions?

OR

- B.** I cried aloud, shaking my head all the while until I felt the cold blades of the scissors against my neck, and heard them gnaw off one of my thick braids. Then I lost my spirit. Since the day I was taken from my mother I had suffered extreme indignities. People had stared at me. I had been tossed about in the air like a wooden puppet. And now my long hair was shingled like a coward's! In my anguish I moaned for my mother, but no one came to comfort me. Not a soul reasoned quietly with me, as my own mother used to do; for now, I was only one of many little animals driven by a herder.
(*Memories of Childhood: The Cutting of My Long Hair*)
- I. Complete the following suitably.
Zitkala-Sa's description of her experience at the boarding school conveys a sense of abandonment through her portrayal of _____
 - II. List any one emotion that Zitkala-Sa experiences as her hair is being cut.
 - III. Select the suitable option to complete the following.
The metaphor of being 'tossed about in the air like a wooden puppet' contribute to the reader's understanding of Zitkala-Sa's feelings of being _____.
 - A. forced to interact with others
 - B. manipulated and controlled
 - C. preached at and insulted
 - D. made to exist like toy animals
 - VI In what ways does the imagery of her 'long hair shingled like a coward's' symbolise the erasure of Zitkala's cultural heritage and the imposition of Western norms?

- 9. Read the following extracts and answer the questions for any one of the given two, A or B.**

1x6=6

A. What a thunderclap these words were to me! Oh, the wretches; that was what they had put up at the town-hall! My last French lesson! Why, I hardly knew how to write! I should never learn anymore! I must stop there, then! Oh, how sorry I was for not learning my lessons, for seeking birds' eggs, or going sliding on the Saar! My books, that had seemed such a nuisance a while ago, so heavy to carry, my grammar, and my history of the saints, were old friends now that I couldn't give up. And M. Hamel, too; the idea that he was going away, that I should never see him again, made me forget all about his ruler and how cranky he was. (The Last Lesson)

I. What was the writer's purpose in using the metaphor of a 'thunderclap'?

II. Select the correct option from those given in brackets to fill in the blank.

The use of exclamatory marks in the first five sentences of the extract serves to express the speaker's _____ (hidden/ intense) emotions.

III. Complete the following suitably.

The activities of seeking birds' eggs and sliding on the Saar reveal two things about Franz's character before his change in perspective. First, his youthful carefree nature and second, his preference for _____.

IV. What is reflected through the shift in the speaker's perception of Mr. Hamel, conveyed through his readiness to forget the ruler?

V. Select the textual option that is closest to indicating a sense of panic.

A. Oh, how sorry I was for not learning my lessons...

B. Why, I hardly knew how to write!

C. Oh, the wretches; that was what they had put up at the town-hall!

D. And M. Hamel, too;

VI. What does the following line from the extract, showcase?

My books, that had seemed such a nuisance a while ago, so heavy to carry, my grammar, and my history of the saints, were old friends now that I couldn't give up.

A. realization

B. confusion

C. expectation

D. affirmation

OR

B. And survival in Seemapuri means rag-picking. Through the years, it has acquired the proportions of a fine art. Garbage to them is gold. It is their daily bread, a roof over their heads, even if it is a leaking roof. But for a child it is even more "I sometimes find a rupee, even a ten-rupee note," Saheb says, his eyes lighting up. When you can find a silver coin in a heap of garbage, you don't stop scrounging, for there is hope of finding more. It seems that for children, garbage has a meaning different from what it means to their parents. For the children it is wrapped in wonder, for the elders it is a means of survival.

(Lost Spring – Stories of Stolen Childhood)

I. What does Saheb's statement about finding money in the garbage reveal about his daily life and aspirations?

- II. Select the correct option from those given in brackets to fill in the blank.
Describing garbage as 'gold' metaphorically elevates its value to the children, helping the reader understand the _____ (dynamic / desperate) conditions under which these children live, where even garbage can represent crucial economic resources.
- III. Complete the following with a suitable reason.
Children continue to scrounge in the garbage because _____.
- IV. How does the perception of garbage differ between children and adults in Seemapuri?
- V. What is implied by the description of rag-picking as having 'acquired the proportions of a fine art' in the excerpt?
A. Rag-picking is an undesirable and simple task that anyone can do without effort.
B. Rag-picking has evolved into a complex skill that is valued within the community.
C. Rag-picking is a temporary activity that does not significantly impact the community.
D. Rag-picking has the status of an artistic hobby that children pursue for enjoyment.
- VI. What is the reason for Saheb's eyes 'lighting up'?
A. The immediate experience of finding something valuable.
B. Discussing his findings with others.
C. Reminiscing about past findings in the garbage.
D. Planning future scavenging expeditions

10. Answer **any five** of the following six questions in 40 50 words each : **5x2=10**

- I. Identify an instance of hope or resilience in 'Lost Spring' and analyse how it reflects one of the story's themes.
- II. Interpret the use of visual imagery by Kamala Das in her poem to depict the passage of time.
- III. What does the contrasting imagery of the church clock and the Prussian trumpets represent, in 'The Last Lesson'?
- IV. How does the author's writing style in 'The Interview' affect the reader's understanding of the story?
- V. Explain how the rattrap symbolises the dual aspects of human nature. (*The Rattrap*)
- VI. What factor/s were largely instrumental in the victory of the peasants in 'Indigo'?

11. Answer **any two** of the following three questions in 40 50 words each : **2x2=4**

- I. Discuss the significance of the toy tiger in the climax of 'The Tiger King.'
- II. Interpret the significance of both literal and metaphorical journeys in the story, 'The Third Level.'
- III. How does Susan Hill subtly portray a blend of pessimism and optimism in 'On the Face of It'?

12. Answer **any one** of the following two questions, in about 120-150 words. **1x5=5**

A Analyse the poems, *A Roadside Stand* and *Aunt Jennifer's Tigers* for the theme of inequality and its impact on the bearers.

OR

B How do the characters of Sophie from 'Going Places' and Subbu from 'Poets and Pancakes' compare and contrast in terms of their aspirations, constraints, and the pursuit of their dreams?

13. Answer **any one** of the following two questions, in about 120-150 words **1x5=5**

A The influence of belief in traditions such as religion, family bonds, or patriotism can be used to develop narrative techniques like setting, motivation, sources of conflict, and pacing. Analyse how the writer has incorporated such influences to good effect in the story, *The Enemy*. Support your answer with valid textual evidence.

OR

B Discuss the narrative techniques used by the author in *The Third Level*. How do these techniques effectively convey the themes of escapism and nostalgia? Provide specific examples from the text to support your analysis.

SAMPLE QUESTION PAPER 2024 – 25

SUBJECT:- ACCOUNTANCY 055

CLASS XII

TIME 3 HOURS

MAX. MARKS 80

GENERAL INSTRUCTIONS:

1. This question paper contains 34 questions. All questions are compulsory.
2. This question paper is divided into two parts, Part A and B.
3. Part - **A is compulsory for all candidates.**
4. Part - B has two options i.e. **(i) Analysis of Financial Statements and (ii) Computerised Accounting.** Students must attempt **only one** of the given options.
5. Question 1 to 16 and 27 to 30 carries 1 mark each.
6. Questions 17 to 20, 31 and 32 carries **3** marks each.
7. Questions from 21, 22 and 33 carries **4** marks each
8. Questions from 23 to 26 and 34 carries **6** marks each
9. There is no overall choice. However, an internal choice has been provided in 7 questions of **one mark**, 2 questions of **three marks**, 1 question of **four marks** and 2 questions of **six marks**.

PART A

(Accounting for Partnership Firms and Companies)

S.No.	Question	Marks
Part A :- Accounting for Partnership Firms and Companies		
1.	Anthony a partner was being guaranteed that his share of profits will not be less than ₹ 60,000 p.a. Deficiency, if any was to be borne by other partners Amar and Akbar equally. For the year ended 31st March, 2024 the firm incurred loss of ₹ 1,80,000. What amount will be debited to Amar's Capital Account in total at the end of the year? A. ₹ 60,000 B. ₹ 1,20,000 C. ₹ 90,000 D. ₹ 80,000	1
2.	Assertion: Partner's current accounts are opened when their capital are fluctuating. Reasoning: In case of Fixed capitals all the transactions other than Capital are done through Current account of the partner. A. Both A and R are true and R is the correct explanation of A. B. Both A and R are true but R is not the correct explanation of A. C. A is true but R is false D. A is false but R is true	1
3.	Forfeiture of shares leads to reduction of _____ Capital. A. Authorised B. Issued C. Subscribed D. Called up	1

	OR																																					
	<p>Moon Ltd. issued 40,000, 10% debentures of ₹100 each at certain rate of discount and were to be redeemed at 20% premium. Existing balance of Securities premium before issuing of these debentures was ₹12,00,000 and after writing off loss on issue of debentures, the balance in Securities Premium was ₹2,00,000. At what rate of discount these debentures were issued?</p> <p>A. 10% B. 5% C. 25% D. 15%</p>																																					
4.	<p>At the time of admission of new partner Vasu, Old partners Paresh and Prabhav had debtors of ₹ 6,20,000 and a provision for doubtful debts (PDD) of ₹ 20,000 in their books. As per terms of admission, assets were revalued, and it was found that debtors worth ₹ 15,000 had turned bad and hence should be written off. Which journal entry reflects the correct accounting treatment of the above situation?</p> <p>A.</p> <table style="width: 100%; border-collapse: collapse;"> <tr> <td style="width: 30%;">Bad Debts A/c Dr.</td> <td style="width: 30%; text-align: right;">15,000</td> <td style="width: 40%;"></td> </tr> <tr> <td style="padding-left: 20px;">To Debtors A/c</td> <td></td> <td style="text-align: right;">15,000</td> </tr> <tr> <td>Prov for D. debts A/c Dr.</td> <td style="text-align: right;">15,000</td> <td></td> </tr> <tr> <td style="padding-left: 20px;">To Bad Debts A/c</td> <td></td> <td style="text-align: right;">15,000</td> </tr> </table> <p>B.</p> <table style="width: 100%; border-collapse: collapse;"> <tr> <td style="width: 30%;">Bad Debts A/c Dr.</td> <td style="width: 30%; text-align: right;">15,000</td> <td style="width: 40%;"></td> </tr> <tr> <td style="padding-left: 20px;">To Debtors A/c</td> <td></td> <td style="text-align: right;">15,000</td> </tr> <tr> <td>Revaluation A/c Dr.</td> <td style="text-align: right;">15,000</td> <td></td> </tr> <tr> <td style="padding-left: 20px;">To Prov for doubtful debts A/c</td> <td></td> <td style="text-align: right;">15,000</td> </tr> </table> <p>C.</p> <table style="width: 100%; border-collapse: collapse;"> <tr> <td style="width: 30%;">Revaluation A/c Dr.</td> <td style="width: 30%; text-align: right;">15,000</td> <td style="width: 40%;"></td> </tr> <tr> <td style="padding-left: 20px;">To Debtors A/c</td> <td></td> <td style="text-align: right;">15,000</td> </tr> </table> <p>D.</p> <table style="width: 100%; border-collapse: collapse;"> <tr> <td style="width: 30%;">Bad Debts A/c Dr.</td> <td style="width: 30%; text-align: right;">15,000</td> <td style="width: 40%;"></td> </tr> <tr> <td style="padding-left: 20px;">To Revaluation A/c</td> <td></td> <td style="text-align: right;">15,000</td> </tr> </table> <p style="text-align: center;">OR</p> <p>Ram and Shyam were partners sharing profits and losses in the ratio of 3:2. Their balance sheet shows building at ₹ 1,60,000. They admitted Mohan as a new partner for 1/4th share. In additional information it is given that building is undervalued by 20%. The share of loss/gain of revaluation of Shyam is _____ & current value of building shown in new balance sheet is _____.</p> <p>A. Gain ₹ 12,800, Value ₹ 1,92,000 B. Loss ₹ 12,800, Value ₹ 1,28,000 C. Gain ₹ 16,000, Value ₹ 2,00,000 D. Gain ₹ 40,000, Value ₹ 2,00,000</p>	Bad Debts A/c Dr.	15,000		To Debtors A/c		15,000	Prov for D. debts A/c Dr.	15,000		To Bad Debts A/c		15,000	Bad Debts A/c Dr.	15,000		To Debtors A/c		15,000	Revaluation A/c Dr.	15,000		To Prov for doubtful debts A/c		15,000	Revaluation A/c Dr.	15,000		To Debtors A/c		15,000	Bad Debts A/c Dr.	15,000		To Revaluation A/c		15,000	1
Bad Debts A/c Dr.	15,000																																					
To Debtors A/c		15,000																																				
Prov for D. debts A/c Dr.	15,000																																					
To Bad Debts A/c		15,000																																				
Bad Debts A/c Dr.	15,000																																					
To Debtors A/c		15,000																																				
Revaluation A/c Dr.	15,000																																					
To Prov for doubtful debts A/c		15,000																																				
Revaluation A/c Dr.	15,000																																					
To Debtors A/c		15,000																																				
Bad Debts A/c Dr.	15,000																																					
To Revaluation A/c		15,000																																				
5.	<p>The profit earned by a firm after retaining ₹ 15,000 to its reserve was ₹ 75,000. The firm had total tangible assets worth ₹ 10,00,000 and outside liabilities ₹ 3,00,000. The value of the goodwill as per capitalization of average profit method was valued as ₹ 50,000. Determine the rate of Normal Rate of Return.</p> <p>A. 10 % B. 5 %</p>	1																																				

	<p>C. 12 % D. 8 %</p>																		
6.	<p>Mohit had applied for 900 shares, and was allotted in the ratio 3 : 2. He had paid application money of ₹ 3 per share and couldn't pay allotment money of ₹ 5 per share. First and Final call of ₹ 2 per share was not yet made by the company. His shares were forfeited. The following entry will be passed</p> <table style="width: 100%; border-collapse: collapse;"> <tr> <td style="width: 40%;">Share Capital A/c Dr.</td> <td style="width: 20%; text-align: center;">X</td> <td style="width: 40%;"></td> </tr> <tr> <td style="padding-left: 20px;">To Share Forfeited A/c</td> <td></td> <td style="text-align: center;">Y</td> </tr> <tr> <td style="padding-left: 20px;">To Share Allotment A/c</td> <td></td> <td style="text-align: center;">Z</td> </tr> </table> <p>Here X, Y and Z are:</p> <table style="width: 100%; border-collapse: collapse;"> <tr> <td style="width: 50%;">A. ₹ 6,000; ₹ 2,700; ₹ 3,300</td> <td style="width: 50%;">B. ₹ 4,800; ₹ 2,700; ₹ 2,100</td> </tr> <tr> <td>C. ₹ 4,800; ₹ 1,800; ₹ 3,000</td> <td>D. ₹ 6,000; ₹ 1,800; ₹ 4,200</td> </tr> </table> <p style="text-align: center;">Or</p> <p>A company forfeited 6,000 shares of ₹ 10 each, on which only application money of ₹ 3 has been paid. 4,000 of these shares were re-issued at ₹ 12 per share as fully paid up. Amount of Capital Reserve will be _____.</p> <table style="width: 100%; border-collapse: collapse;"> <tr> <td style="width: 50%;">A. ₹ 18,000</td> <td style="width: 50%;">B. ₹ 12,000</td> </tr> <tr> <td>C. ₹ 30,000</td> <td>D. ₹ 24,000</td> </tr> </table>	Share Capital A/c Dr.	X		To Share Forfeited A/c		Y	To Share Allotment A/c		Z	A. ₹ 6,000; ₹ 2,700; ₹ 3,300	B. ₹ 4,800; ₹ 2,700; ₹ 2,100	C. ₹ 4,800; ₹ 1,800; ₹ 3,000	D. ₹ 6,000; ₹ 1,800; ₹ 4,200	A. ₹ 18,000	B. ₹ 12,000	C. ₹ 30,000	D. ₹ 24,000	1
Share Capital A/c Dr.	X																		
To Share Forfeited A/c		Y																	
To Share Allotment A/c		Z																	
A. ₹ 6,000; ₹ 2,700; ₹ 3,300	B. ₹ 4,800; ₹ 2,700; ₹ 2,100																		
C. ₹ 4,800; ₹ 1,800; ₹ 3,000	D. ₹ 6,000; ₹ 1,800; ₹ 4,200																		
A. ₹ 18,000	B. ₹ 12,000																		
C. ₹ 30,000	D. ₹ 24,000																		
7.	<p>On 1st April 2019 a company took a loan of ₹80,00,000 on security of land and building. This loan was further secured by issue of 40,000, 12% Debentures of ₹100 each as collateral security. On 31st March 2024 the company defaulted on repayment of the principal amount of this loan consequently on 1st April 2024 the land and building were taken over and sold by the bank for ₹70,00,000. For the balance amount debentures were sold in the market on 1st May 2024. From which date would the interest on debentures become payable by the company?</p> <p>A. 1st April 2019. B. 31st March 2024. C. 1st April 2024. D. 1st May 2024.</p>	1																	
8.	<p>Rama, a partner took over Machinery of ₹ 50,000 in full settlement of her Loan of ₹ 60,000. Machinery was already transferred to Realisation Account. How it will effect the Realisation Account?</p> <table border="1" style="width: 100%; border-collapse: collapse;"> <tr> <td style="width: 50%; padding: 5px;">A. Realisation Account will be credited by ₹ 60,000</td> <td style="width: 50%; padding: 5px;">B. Realisation Account will be credited by ₹ 10,000</td> </tr> <tr> <td style="padding: 5px;">C. Realisation Account will be credited by ₹ 50,000</td> <td style="padding: 5px;">D. No effect on Realisation Account</td> </tr> </table> <p style="text-align: center;">OR</p> <p>Dada, Yuvi and Viru were partners sharing profits and losses in the ratio 3:2:1. Their</p>	A. Realisation Account will be credited by ₹ 60,000	B. Realisation Account will be credited by ₹ 10,000	C. Realisation Account will be credited by ₹ 50,000	D. No effect on Realisation Account	1													
A. Realisation Account will be credited by ₹ 60,000	B. Realisation Account will be credited by ₹ 10,000																		
C. Realisation Account will be credited by ₹ 50,000	D. No effect on Realisation Account																		

	<p>books showed Workmen Compensation Reserve of ₹ 1,00,000. Workmen Claim amounted to ₹ 60,000. How it will affect the books of Accounts at the time of dissolution of firm?</p> <p>A. Only ₹ 40,000 will be distributed amongst partner's capital account</p> <p>B. ₹ 1,00,000 will be credited to Realisation Account and ₹ 60,000 will be paid off.</p> <p>C. ₹ 60,000 will be credited to Realisation Account and will be even paid off. Balance ₹ 40,000 will be distributed amongst partners.</p> <p>D. Only ₹ 60,000 will be credited to Realisation Account and will be even paid off</p>	
9.	<p>Ikka, Dukka and Teeka were partners sharing profits and losses in the ratio of 2:2:1. Their fixed Capital balances were ₹ 5,00,000; ₹ 4,00,000 and ₹ 3,00,000 respectively. For the year ended March 31, 2024 profits of ₹ 84,000 were distributed without providing for Interest on Capital @ 10% p.a as per the partnership deed. While passing an adjustment entry, which of the following is correct?</p> <p>A. Teeka will be debited by ₹ 4,200</p> <p>B. Teeka will be credited by ₹ 4,200</p> <p>C. Teeka will be credited by ₹ 6,000</p> <p>D. Teeka will be debited by ₹ 6,000</p>	1
10.	<p>At the time of dissolution Machinery appears at ₹ 10,00,000 and accumulated depreciation for the machinery appears at ₹ 6,00,000 in the balance sheet of a firm. This machine is taken over by a creditor of ₹ 5,40,000 at 5% below the net value. The balance amount of the creditor was paid through bank. By what amount should the bank account be credited for this transaction?</p> <p>A. ₹ 60,000.</p> <p>B. ₹ 1,60,000.</p> <p>C. ₹ 5,40,000.</p> <p>D. ₹ 4,00,000.</p>	1
11.	<p>Rahul, Samarth and Ayaan were partners sharing profits and losses in the ratio of 5:4:3. Ayaan's fixed Capital balance as on March 31, 2024 was ₹ 2,70,000. Which of the following items would have affected this Capital balance?</p> <p>A. Profit/Loss for the year</p> <p>B. Additional Capital introduced</p> <p>C. Reduction in Capital due to Capital Adjustment</p> <p>D. Both B and C</p>	1
12.	<p>Shares issued as sweat equity can be</p> <p>(i) Issued at par.</p> <p>(ii) Issued at discount.</p> <p>(iii) Issued at a premium.</p> <p>Which of the following is correct?</p> <p>A. Only (i) is correct.</p> <p>B. Both (i) and (iii) are correct.</p> <p>C. All are correct.</p> <p>D. Only (ii) is correct.</p>	1
13.	<p>2,000 shares allotted to Ms. Regal, on which ₹ 80 each called up and ₹ 50 paid were forfeited and reissued for ₹ 70 each as ₹ 90 paid up. Amount transferred to capital</p>	1

	reserve A/c is A. ₹ 1,00,000 B. ₹ 60,000 C. ₹ 40,000 D. ₹ 20,000	
14.	Joey, Sam and Tex were partners sharing profits and losses in the ratio 5:3:2. W.e.f 01 April, 2024 they decided to share future profits and losses in the ratio 2:1:1. For which of the following balances Tex will be credited at the time of reconstitution of firm, if the firm decided to continue with available accumulated profits and losses balances. A. General Reserve ₹ 2,00,000 and Profit and Loss (Dr.) ₹ 1,20,000 B. General Reserve ₹ 2,00,000 and Profit and Loss (Cr.) ₹ 2,50,000 C. Deferred Revenue Expenditure ₹ 50,000 and Profit and Loss (Cr.) ₹ 80,000 D. Deferred Revenue Expenditure ₹ 50,000 and Profit and Loss (Dr.) ₹ 80,000	1
15.	Rohit, Virat and Shikhar were partners sharing profits and losses in the ratio 3:1:1. Their Capital balance as on March 31, 2024 was ₹ 3,00,000; ₹ 2,70,000 and ₹ 2,50,000 respectively. On the same date, they admitted Hardik as a new partner for 20% share. Hardik was to bring ₹ 80,000 for his share of goodwill and 1/5 of the combined capital of all the partners of new firm. What will be the amount of capital brought in by Hardik on his admission as a new partner? A. ₹ 2,25,000 B. ₹ 1,80,000 C. ₹ 2,60,000 D. ₹ 3,05,000 OR A, B and C were partners sharing profits and losses equally. B died on 31 August, 2023 and total amount transferred to B's executors was ₹ 13,20,000. B's executors were being paid ₹ 1,20,000 immediately and balance was to be paid in four equal semi-annual instalments together with interest @ 10% p.a. Total amount of interest to be credited to B's executors Account for the year ended March 31, 2024 will be? A. ₹ 70,000 B. ₹ 67,500 C. ₹ 60,000 D. ₹ 77,000	1
16.	String and Kite were partners sharing profits and losses in the ratio 5:3. They admitted spinner as a new partner. String sacrificed $\frac{1}{4}$ from his share and Kite sacrificed $\frac{1}{6}$ of his share. What will be the new ratio? A. 6:5:5 B. 9:5:10 C. 15:10:7 D. 35:21:40	1
17.	Rusting, a partner of a firm under dissolution was to get a remuneration 2% of the total assets realised other than cash and 10% of the amount distributed to the partners. Sundry assets (including Cash ₹ 8,000) realised at ₹ 1,16,000 and sundry liabilities to be paid ₹ 31,340. Calculate Rustings's remuneration and Show your workings clearly. Also pass necessary journal entry for remuneration.	3
18.	A, B and C were partners sharing profits, and losses in the ratio of 2:2:1. C died on 1st July, 2023 on which date the capitals of A, B and C after all necessary adjustments stood at ₹74,000, ₹ 63,750 and 42,250 respectively. A and B continued to carry on the business for six months without settling the accounts of C. During the period of six months from 1 -7-2023, a profit of ₹ 20,500 is earned using the firm's property. State	3

which of the two options available u/s 37 of the Indian Partnership Act, 1932 should be exercised by executors of C and why?.

Or

Amit and Kartik are partners sharing profits and losses equally. They decided to admit Saurabh for an equal share in the profits. For this purpose, the goodwill of the firm was to be valued at four years' purchase of super profits.

The Balance Sheet of the firm on Saurabh's admission was as follows:

Liabilities		Amount (₹)	Assets		Amount(₹)
Capital Accounts			Fixed Assets (Tangible)		75,000
Amit	90,000		Furniture		15,000
Kartik	50,000	1,40,000	Stock		30,000
Creditors		5,000	Debtors		20,000
General Reserve		20,000	Cash		50,000
Bills payable		25,000			
		1,90,000			1,90,000

The normal rate of return is 12% p.a. Average profit of the firm for the last four years was ₹30,000. Calculate Saurabh's share of goodwill.

19.	<p>Buddha Limited took over assets of ₹ 40,00,000 and liabilities of ₹ 6,50,000 of Ginny Limited. Buddha Limited issued 30,000, 8% Debentures of ₹ 100 each at 10% discount, to be redeemed at 5% premium along with cheque of ₹ 5,00,000. Pass necessary journal entries in the books of Buddha Ltd.</p> <p>Or</p> <p>A company forfeited 8,000 shares of ₹ 10 each on which ₹ 8 were called (including ₹ 1 premium) and ₹ 6 was paid (including ₹ 1 premium). Out of these 5,000 shares were re-issued at maximum possible discount. Pass necessary journal entries.</p>	3
20.	<p>Bat, Cat and Rat were partners sharing profits and losses in the ratio 5:3:2. Cat retired and on that date there was a balance of Investment of ₹ 4,00,000 and Investment Fluctuation Reserve of ₹ 1,00,000 was appearing in the balance sheet.</p> <p>Pass necessary journal entries for Investment Fluctuation reserve in the following cases.</p> <p>(i) Market Value of Investments was ₹ 4,80,000.</p> <p>(ii) Market Value of Investments was ₹ 3,80,000.</p> <p>(iii) Market Value of Investments was ₹ 2,90,000</p>	3
21.	<p>A company forfeited certain number of shares of Face Value ₹ 10 each, for non-payment of final call money of ₹ 4. These shares were reissued at a discount of ₹ 5 and amount of ₹ 4500 was transferred to capital Reserve account. Pass the necessary journal entries to show the above transactions and prepare Share forfeited account.</p>	4
22.	<p>X, Y and Z were partners sharing profits and losses equally. Y died on 1st October, 2023 and total amount transferred to Y's executors was ₹ 15,60,000. Y's executors were being paid ₹ 3,60,000 immediately and balance was to be paid in four equal quarterly instalments, together with Interest @ 6% p.a. Pass entries till payment of first two</p>	4

	instalments.																																																	
23.	<p>K.N. Ltd. invited applications for issuing 6,00,000 equity shares of ₹10 each at a premium of ₹3 per share. The amount was payable as follows: On Application and Allotment - ₹3 per share; On First Call -₹4 per share; On Second and Final Call — Balance (including premium). The issue was oversubscribed by 1,50,000 shares. Applications for 50,000 shares were rejected and the application money was refunded. Shares were allotted to the remaining applicants as follows:</p> <p>Category I: Those who had applied for 4,00,000 shares were allotted 3,00,000 shares on pro-rata basis.</p> <p>Category II: The remaining applicants were allotted the remaining shares.</p> <p>Excess application money received with applications was adjusted towards sums due on first call. Rakesh to whom 6,000 shares were allotted (out of Category I) failed to pay the first call money. His shares were forfeited. The forfeited shares were re-issued at ₹13 per share fully paid up after the second call. Pass necessary journal entries for the above transactions in the books of K.N. Ltd.</p> <p style="text-align: center;">OR</p> <p>a) Pass the necessary journal entries for 'Issue of Debenture' for the following:</p> <ol style="list-style-type: none"> i. Arman Ltd. issued 750, 12% Debentures of ₹100 each at a discount of 10% redeemable at a premium of 5%. ii. Sohan Ltd. issued 800, 9% Debentures of ₹100 each at a premium of 20 per debenture redeemable at a premium of ₹10 per Debenture. <p>b) X Ltd. obtained a loan of ₹4,00,000 from IDBI Bank. The company issued 5,000 9% Debentures of ₹100 each as a collateral security for the same. Show how these items will be presented in the Balance Sheet of the company.</p>	6																																																
24.	<p>Meghna, Mehak and Mandeep were partners in a firm whose Balance Sheet as on 31st March, 2023 was as under:</p> <p style="text-align: center;">Balance Sheet</p> <table border="1" style="width: 100%; border-collapse: collapse;"> <thead> <tr> <th colspan="2" style="text-align: center;"><i>Liabilities</i></th> <th style="text-align: center;">Amount</th> <th colspan="2" style="text-align: center;"><i>Assets</i></th> <th style="text-align: center;">Amount</th> </tr> </thead> <tbody> <tr> <td>Creditors</td> <td></td> <td style="text-align: right;">28,000</td> <td>Cash</td> <td></td> <td style="text-align: right;">27,000</td> </tr> <tr> <td>General Reserve</td> <td></td> <td style="text-align: right;">7,500</td> <td>Debtors</td> <td></td> <td style="text-align: right;">20,000</td> </tr> <tr> <td>Capitals:</td> <td></td> <td></td> <td>Stock</td> <td></td> <td style="text-align: right;">28,000</td> </tr> <tr> <td>Meghna</td> <td style="text-align: right;">20,000</td> <td></td> <td>Furniture</td> <td></td> <td style="text-align: right;">5,000</td> </tr> <tr> <td>Mehak</td> <td style="text-align: right;">14,500</td> <td></td> <td></td> <td></td> <td></td> </tr> <tr> <td>Mandeep</td> <td style="text-align: right;"><u>10,000</u></td> <td style="text-align: right;">44,500</td> <td></td> <td></td> <td></td> </tr> <tr> <td></td> <td></td> <td style="text-align: right;"><u>80,000</u></td> <td></td> <td></td> <td style="text-align: right;"><u>80,000</u></td> </tr> </tbody> </table> <p>Mehak retired on this date under following terms:</p> <ol style="list-style-type: none"> (i) To reduce stock and furniture by 5% and 10% respectively. (ii) To provide for doubtful debts at 10% on debtors. (iii) Goodwill was valued at `12,000. (iv) Creditors of Rs.8,000 were settled at Rs.7,100. (v) Mehak should be paid off and the entire sum payable to Mehak shall be brought in by Meghna and Mandeep in such a way that their capitals should be in their new profit-sharing ratio and a balance of Rs.25,000 is maintained in the cash account. <p>Prepare Revaluation Account and partners' capital accounts of the new firm.</p>	<i>Liabilities</i>		Amount	<i>Assets</i>		Amount	Creditors		28,000	Cash		27,000	General Reserve		7,500	Debtors		20,000	Capitals:			Stock		28,000	Meghna	20,000		Furniture		5,000	Mehak	14,500					Mandeep	<u>10,000</u>	44,500						<u>80,000</u>			<u>80,000</u>	6
<i>Liabilities</i>		Amount	<i>Assets</i>		Amount																																													
Creditors		28,000	Cash		27,000																																													
General Reserve		7,500	Debtors		20,000																																													
Capitals:			Stock		28,000																																													
Meghna	20,000		Furniture		5,000																																													
Mehak	14,500																																																	
Mandeep	<u>10,000</u>	44,500																																																
		<u>80,000</u>			<u>80,000</u>																																													

Or

Varun and Vivek were partners in a firm sharing profits in the ratio of 3:2. The balance in their capital and current accounts as on 1st April, 2022 were as under:

Particulars	Varun(₹)	Vivek(₹)
Capital accounts	3,00,000 (Cr.)	2,00,000 (Cr.)
Current accounts	1,00,000 (Cr.)	28,000 (Dr)

The partnership deed provided that Varun was to be paid a salary of ₹ 5,000 p.m. whereas Vivek was to get a commission of ₹ 30,000 for the year. Interest on capital was to be allowed @ 8% p.a. whereas interest on drawings was to be charged @ 6% p.a. The drawings of Varun were ₹ 3,000 at the beginning of each quarter while Vivek withdrew ₹ 30,000 on 1st September, 2022. The net profit of the firm for the year, 2022-23, before making the above adjustments was ₹ 1,20,000.

Prepare Profit and Loss Appropriation Account and Partners' Capital and Current Accounts.

25.

Sunny and Bobby were partners in a firm sharing profits and losses in the ratio of 3:2, their balance sheet as at 31st March, 2012:

Liabilities		Amount	Assets		Amount
Creditors		1,90,000	Bank		5,000
Bills Payable		1,10,000	Fixed Deposits		70,000
Employees provident fund		50,000	Stock		86,000
Mrs. Sunny's Loan		55,000	Investments		1,04,000
Bobby's Loan		85,000	Debtors	1,77,000	
Investment Fluctuation Fund		30,000	(-) Provision for D/D	<u>12,000</u>	1,65,000
Capitals:			Other Fixed Assets		3,80,000
Sunny	2,20,000		Deferred Revenue Expenditure		35,000
Bobby	<u>1,20,000</u>	3,40,000	Sunny's Loan		15,000
		<u>8,60,000</u>			<u>8,60,000</u>

The firm was dissolved on 31st March, 2012. The assets were realized and the liabilities were paid as under:

- Sunny promised to pay off Mrs. Sunny's Loan
- Bobby took away stock at 20% discount and 80% of the investments at 10% discount.
- Dharam, a debtor of Rs. 60,000 had to pay the amount due 2 months after the date of dissolution. He was allowed a discount of 9% p.a. for making immediate payment.
- Creditors were paid Rs.1,75,000 in full settlement of their claim.
- 90% of Other fixed assets realised Rs. 1,98,000 and remaining were realised at discount of 15%.
- Balance of investments were sold at 75% value and Fixed Deposits were realised at 110%.
- There was an old furniture which has been written off completely from the books, Bobby took away the same for Rs. 41,000 against his loan and balance to

6

him was given in cash.
 (h) Realisation expenses Rs. 20,000 were paid by Sunny and Bobby equally on behalf of the firm.
 You are required to prepare Realisation A/c

26.

Balance Sheet (Extract)			
Of XYZEE Ltd as at 31.03.2024 (as per schedule -III of Companies Act 2013)			
	Note no.	31.03.2023	31.03.2024
I- Equity & Liabilities			
1. Shareholders Funds			
a). Share Capital	1	44,90,000	54,90,000
b). Reserves and Surplus	2	2,00,000	3,60,000

Note no.1 (For year ending 31.03.2023)		
Share Capital		
1). Authorised Share Capital		
8,00,000 Equity Shares of Rs. 10 each		80,00,000
2). Issued Share Capital		
4,50,000 Equity Shares of Rs. 10 each		45,00,000
3). Subscribed Share Capital		
a). Subscribed and Fully paid		
Rs.10 per share on 4,45,000 Equity Shares	44,50,000	
b). Subscribed and not Fully paid		
Rs. 10 per share on 5,000 Equity shares	50,000	
Less not paid: Rs. 2 per share on 5,000 Equity shares	-10,000	44,90,000

Note no.1 (For year ending 31.03.2024)		
Share Capital		
1). Authorised Share Capital		
8,00,000 Equity Shares of Rs. 10 each		80,00,000
2). Issued Share Capital		
5,50,000 Equity Shares of Rs. 10 each		55,00,000
(Out of these 40,000 shares were issued to the vendors as consideration for Capital asset purchased)		
3). Subscribed Share Capital		
a). Subscribed and Fully paid		

6

Rs.10 per share on 5,45,000 Equity Shares	54,50,000	
c) Subscribed and not Fully paid		
Rs. 10 per share on 5,000 Equity shares	50,000	
Less not paid: Rs. 2 per share on 5,000 Equity shares	-10,000	54,90,000

Note no. 2 - Reserves and Surplus		
	31.03.2023	31.03.2024
Capital Reserve	Nil	40,000
Securities Premium	2,00,000	3,20,000

During the year the company took over the business of Quipa Ltd. with Assets of Rs. 12,00,000/- and Liabilities of Rs.7,30,000. Purchase consideration was paid in cash and by issue of equity shares at par. The entire transaction resulted in Capital reserve of Rs.40,000.

Q1. What is the total face value of Shares issued by the Company during the year 2023-24.

- A). Rs.10,00,000
- B). Rs. 6,00,000
- C). Rs. 9,50,000
- D). Rs. 11,20,000

Q2. Shares issued for cash during the year were issued at _____. (assuming they were issued together)?

- A). Rs.10
- B). Rs.8
- C). Rs.12
- D). Rs.11.20

Q3. On April 1, 2024, the company forfeited all the defaulting shares. What amount will appear in the Share Forfeiture account at the time of forfeiture?

- A). Rs.40,000
- B). Rs. 50,000
- C). Rs.10,000
- D). Rs. 60,000

Q4. What will be the number of Issued shares, as on April 1,2024, after the forfeiture of these shares?

- A). 5,45,000 shares
- B). 5,50,000 shares.
- C). 4,45,000 shares.
- D). 5,05,000 shares.

	<p>Q5. If 2,000 of the forfeited shares were issued at Rs. 14 per share, what will be the amount of securities premium and Capital reserve respectively as on April 1, 2024?</p> <p>A). Rs, 3,20,000, Rs.40,000 B). Rs.3,28,000, Rs.56,000 C). Rs.3,28,000, Rs.80,000 D). Rs.3,20,000, Rs.80,000</p> <p>Q6. What will be the amount in the "Subscribed and Fully paid" after the reissue of these 2000 shares?</p> <p>A). Rs.54,50,000 B). Rs.55,00,000 C). Rs.54,70,000 D). Rs.54,80,000</p>	
Part B :- Analysis of Financial Statements (Option – I)		
27.	<p>When an analyst analysis the financial statements of an enterprise over a number of years, the analysis is called _____analysis.</p> <p>A. Static B. External C. Horizontal D. Vertical</p> <p style="text-align: center;">OR</p> <p>-----will result in increase in Liquid Ratio without affecting the Current Ratio.</p> <p>A. Sale of Stock at cost price B. Sale of stock at loss C. Sale of stock at profit D. Sale of investments at cost</p>	1
28.	<p>As on 31.02.2024 the following information of Bartan Manufacturing ltd. is available .</p> <p style="padding-left: 40px;">Net profit ratio 40%</p> <p style="padding-left: 40px;">Operating profit ratio 50%</p> <p>On 1st April 2024 it was came to notice that the accountant had omitted recording the interest received on investment of Rs. 2,00,000 for the financial year 2023-24. The required rectification was done. What will be the effect of the same on Net Profit and operating profit ratio?</p> <p>A. Net Profit ratio will increase and Operating Profit ratio will decrease B. Both Net Profit ratio and Operating Profit ratio will increase C. Net Profit ratio will increase and Operating Profit ratio will have no change D. Net Profit ratio will remain same and Operating Profit ratio will increase</p>	1
29.	<p>While computing cash from operating activities, which of the following item(s) will be added to the net profit?</p> <p>(i) Decrease in value of inventory (ii) Increase in share capital</p>	1

	<p>(iii) Increase in the value of trade receivables (iv) Increase in the amount of outstanding expenses</p> <p>A. Only (i) B. Only (i) and (ii) C. Only (i) and (iii) D. Only (i) and (iv)</p> <p style="text-align: center;">OR</p> <p>Which of the following statements is correct?</p> <p>A. Investments in shares are excluded from cash equivalents unless they are in, substance, cash equivalents. B. Short-term marketable securities which can be readily converted into cash are not treated as cash equivalents C. In case of a financial enterprise, interest received, and dividend received are classified as investing activities while dividend paid and interest paid on debentures are operating activities. D. Provision for tax made during the year should be classified as an outflow from operating activity.</p>											
30.	<p>Statement-I: 'Shree Ltd.' was carrying on a business of packaging in Delhi and earned good profits in the past years. The company wanted to expand its business and required additional funds. To meet its requirements the company issued equity shares of ₹30,00,000. It purchased a computerized machine of ₹20,00,000. During the current year the Net Profit of the company was ₹15,00,000. Cash flows from operating, investing and financing activities from the above transactions will be ₹15,00,000: (₹20,00,000); ₹30,00,000 respectively.</p> <p>Statement-II: The patents of X Ltd. increased from ₹3,00,000 in 2021-22 to ₹3,50,000 in 2022-23. It will be taken as purchase of Patents of 50,000 and will be shown under Cash outflow from Investing Activities.</p> <p>A. Both the statements are true. B. Both the statements are false. C. Only Statement-I is true. D. Only Statement-II is true.</p>	1										
31.	<p>Find the heads and sub-heads under which the following items will appear in the balance sheet of a company as per Schedule III, Part I of Companies Act, 2013?</p> <p>a) Furniture and Fixture b) Advance paid to contractor for building under construction c) Accrued Income d) Loans repayable on demand to Bank e) Employees earned leaves payable on retirement f) Employees earned leaves encash able</p>	3										
32.	<p>Complete the Comparative Statement of Profit and Loss:</p> <table border="1" style="width: 100%; border-collapse: collapse;"> <thead> <tr> <th style="width: 35%;"><i>Particulars</i></th> <th style="width: 10%;"><i>2022-23</i></th> <th style="width: 10%;"><i>2023-24</i></th> <th style="width: 15%;"><i>Absolute change</i></th> <th style="width: 10%;"><i>% change</i></th> </tr> </thead> <tbody> <tr> <td> </td> <td> </td> <td> </td> <td> </td> <td> </td> </tr> </tbody> </table>	<i>Particulars</i>	<i>2022-23</i>	<i>2023-24</i>	<i>Absolute change</i>	<i>% change</i>						3
<i>Particulars</i>	<i>2022-23</i>	<i>2023-24</i>	<i>Absolute change</i>	<i>% change</i>								

	<table border="1"> <tr> <td>Revenue from Operations</td> <td>16,00,000</td> <td>20,00,000</td> <td>?</td> <td>?</td> </tr> <tr> <td>Less: Employees Benefit Expenses</td> <td>8,00,000</td> <td>?</td> <td>?</td> <td>25%</td> </tr> <tr> <td>Less: Other Expenses</td> <td>2,00,000</td> <td>?</td> <td>(1,00,000)</td> <td>?</td> </tr> <tr> <td>Profit before tax</td> <td>6,00,000</td> <td>?</td> <td>?</td> <td>50%</td> </tr> <tr> <td>Tax @30%</td> <td>?</td> <td>?</td> <td>90,000</td> <td>?</td> </tr> <tr> <td>Profit after tax</td> <td>4,20,000</td> <td>?</td> <td>2,10,000</td> <td>?</td> </tr> </table>	Revenue from Operations	16,00,000	20,00,000	?	?	Less: Employees Benefit Expenses	8,00,000	?	?	25%	Less: Other Expenses	2,00,000	?	(1,00,000)	?	Profit before tax	6,00,000	?	?	50%	Tax @30%	?	?	90,000	?	Profit after tax	4,20,000	?	2,10,000	?	
Revenue from Operations	16,00,000	20,00,000	?	?																												
Less: Employees Benefit Expenses	8,00,000	?	?	25%																												
Less: Other Expenses	2,00,000	?	(1,00,000)	?																												
Profit before tax	6,00,000	?	?	50%																												
Tax @30%	?	?	90,000	?																												
Profit after tax	4,20,000	?	2,10,000	?																												
33.	<p>Calculate Gross Profit Ratio from the following information Revenue from Operations ₹ 10,00,000; Purchases ₹ 3,60,000; Carriage Inwards ₹ 50,000; Employee benefit Expenses ₹ 1,00,000 (including Wages of ₹ 60,000); Opening Inventory ₹ 60,000 and Average Inventory ₹ 80,000.</p> <p style="text-align: center;">OR</p> <p>Profit after tax amounted to ₹ 6,00,000, and tax rate was 20%. If earnings before interest and tax was ₹ 10,00,000 and Nominal Value of Debentures amounted to ₹ 25,00,000 (assuming the only debt of the company), determine the rate of interest on debentures</p>	4																														
34.	<p>(a) From the following information, calculate Cash flow from Operating Activities.</p> <table border="1"> <thead> <tr> <th>Particulars</th> <th>31 March 2023</th> <th>31 March 2024</th> </tr> </thead> <tbody> <tr> <td>Surplus i.e Balance in Statement of Profit and Loss</td> <td>6,00,000</td> <td>5,00,000</td> </tr> <tr> <td>Provision for Tax</td> <td>1,00,000</td> <td>1,20,000</td> </tr> <tr> <td>Trade Receivables</td> <td>2,00,000</td> <td>2,40,000</td> </tr> <tr> <td>Trade Payables</td> <td>1,50,000</td> <td>2,00,000</td> </tr> <tr> <td>Goodwill</td> <td>2,00,000</td> <td>1,50,000</td> </tr> </tbody> </table> <p>Additional Information:- Proposed Dividend for the year ended March 31, 2023 and March 31, 2024 was ₹ 1,50,000 and ₹ 1,80,000 respectively.</p> <p>(b) From the following information calculate the Cash from Investing Activities</p> <table border="1"> <thead> <tr> <th>Particulars</th> <th>31 March 2023</th> <th>31 March 2024</th> </tr> </thead> <tbody> <tr> <td>Machinery (Cost)</td> <td>20,00,000</td> <td>28,00,000</td> </tr> <tr> <td>Accumulated Depreciation</td> <td>4,00,000</td> <td>6,50,000</td> </tr> </tbody> </table> <p>Additional Information:-</p> <p>(i) Machinery costing ₹ 50,000 (Book Value ₹ 40,000) was lost by fire and insurance claim of ₹ 32,000 was received.</p> <p>(ii) Depreciation charged during the year was ₹ 3,50,000.</p> <p>(iii) A part of Machinery costing ₹ 2,50,000 was sold at a loss of ₹ 20,000.</p>	Particulars	31 March 2023	31 March 2024	Surplus i.e Balance in Statement of Profit and Loss	6,00,000	5,00,000	Provision for Tax	1,00,000	1,20,000	Trade Receivables	2,00,000	2,40,000	Trade Payables	1,50,000	2,00,000	Goodwill	2,00,000	1,50,000	Particulars	31 March 2023	31 March 2024	Machinery (Cost)	20,00,000	28,00,000	Accumulated Depreciation	4,00,000	6,50,000	6			
Particulars	31 March 2023	31 March 2024																														
Surplus i.e Balance in Statement of Profit and Loss	6,00,000	5,00,000																														
Provision for Tax	1,00,000	1,20,000																														
Trade Receivables	2,00,000	2,40,000																														
Trade Payables	1,50,000	2,00,000																														
Goodwill	2,00,000	1,50,000																														
Particulars	31 March 2023	31 March 2024																														
Machinery (Cost)	20,00,000	28,00,000																														
Accumulated Depreciation	4,00,000	6,50,000																														
Part B :- Computerised Accounting (Option – II)																																
27.	<p>The syntax of PMT Function is _____</p> <p>A. PMT (rate, pv, nper, [fv], [type]) B. PMT (rate, nper, pv, [fv], [type]) C. PMT (rate, pv, nper, [type], [fv])</p>	1																														

	<p>D. PMT (rate, nper, pv, [type], [fv])</p> <p style="text-align: center;">Or</p> <p>In Excel, the chart tools provide three different options _____, _____ and _____ for formatting.</p> <p>A. Layout, Format, DataMaker B. Design, Layout, Format C. Format, Layout, Label D. Design, DataMaker, Layout</p>	
28.	<p>Which formulae would result in TRUE if C4 is less than 10 and D4 is less than 100?</p> <p>A. =AND(C4>10, D4>10) B. =AND(C4>10, C4<100). C. =AND(C4>10, D4<10). D. =AND (C4<10, D4,100)</p>	1
29.	<p>Which function results can be displayed in Auto Calculate?</p> <p>A. SUM and AVERAGE B. MAX and LOOK C. LABEL and AVERAGE D. MIN and BLANK</p> <p style="text-align: center;">Or</p> <p>When navigating in a workbook, which command is used to move to the beginning of the current row?</p> <p>A. [Ctrl]+[Home] B. [Page Up] C. [Home] D. [Ctrl]+[Backspace]</p>	1
30.	<p>What category of functions is used in this formula: =PMT (C10/12, C8, C9,1)</p> <p>A. Logical B. Financial C. Payment D. Statistical</p>	1
31.	<p>State any three types of Accounting Vouchers used for entry.</p>	3
32.	<p>State any three requirements which should be considered before making an investing decision to choose between 'Desktop database' or 'Server database'.</p>	3
33.	<p>State the features of Computerized Accounting system.</p> <p style="text-align: center;">Or</p>	4

	Explain the use of 'Conditional Formatting'.	
34.	Describe two basic methods of charging depreciation. Differentiate between both of them.	6


BUSINESS STUDIES (054)
CLASS XII (2024-25)
SAMPLE QUESTION PAPER

TIME: 3 HOURS

M.M. – 80

- This question paper contains 34 questions.
- Marks are indicated against each question.
- Answers should be brief and to the point.
- Answers to the questions carrying 3 marks may be from 50 to 75 words.
- Answers to the questions carrying 4 marks may be about 150 words.
- Answers to the questions carrying 6 marks may be about 200 words.

Q.NO.	QUESTION	MARKS
1.	<p>The newly appointed Production Manager of Saheb Ltd., a firm manufacturing toys, Mr Ahrawat noticed that the workers in the factory were not giving their best as the physical conditions in the factory were not good. He conducted an experiment to see the effect of improvement in the physical conditions in the factory on the performance of the workers, by providing adequate ventilation and water facilities. He observed that the fatigue level of the workers reduced. The nature of management being highlighted in the above case is:</p> <p>A. Management as science B. Management as profession C. Management as art D. Both A. and C.</p>	1
2.	<p>Jasmine Ahluwalia is the manager of an artefacts museum's marketing team, responsible for promoting exhibitions and events. In the previous season, she defined the total work of managing the events into graphic designing, registration inquiries, bill payments, etc, in order to facilitate specialisation. However, instead of allocating work, she had assigned each team member the full responsibility of managing the promotion of an entire event. In spite of holding regular team meetings to take feedback, Jasmine found problems throughout the events season in the quality of graphic design, registration inquiry, bill payments, etc,.</p> <p>For the upcoming events season, Jasmine has decided to divide these responsibilities on the basis of her observation of the areas in which the individual team members have excelled in the previous season and allocate the roles based on their skills and competencies.</p> <p>Identify the step in the organising process which was not properly performed in the previous season but has been duly performed for the upcoming season.</p> <p>A. Identification and division of work B. Establishing reporting relationships C. Departmentalisation D. Assignment of duties</p>	1
3.	<p>Read the following statements: Assertion (A) and Reason (R). Choose the correct alternative from those given below:</p>	1

	<p>Assertion(A): Financial Planning aims at enabling the company to tackle the uncertainty in respect of the availability and timing of the funds.</p> <p>Reason(R): Capital structure refers to the mix between owners' and borrowed funds</p> <p>Alternatives :</p> <p>A. Both Assertion (A) is false and Reason (R) are true.</p> <p>B. Both Assertion (A) and Reason (R) are false.</p> <p>C. Both Assertion (A) and Reason (R) are true, but Reason (R) is not the correct explanation of the Assertion.</p> <p>D. Both Assertion (A) and Reason (R) are true, and Reason (R) is the correct explanation of the Assertion.</p>	
4.	<p>Read the following statements carefully:</p> <p>Statement I: Secondary Market directly promotes capital formation.</p> <p>Statement II: Capital market deals in medium and long term securities such as equity shares and debentures.</p> <p>In the light of given statements, choose the correct alternative from the following:</p> <p>A. Both the statements are true.</p> <p>B. Both the statements are false.</p> <p>C. Statement I is true, Statement II is false.</p> <p>D. Statement II is true, Statement I is false.</p>	1
5.	<p>Choose the statement that correctly highlights the benefit of using external sources of recruitment.</p> <p>A. Competitive spirit among the existing staff</p> <p>B. Reduction in employees turnover</p> <p>C. Helps in increasing employees satisfaction</p> <p>D. Develops a sense of security amongst employees</p>	1
6.	<p>Goodwill Enterprises is a large-scale automobile manufacturer, who fulfills the needs of both industrial users and consumers. The company is providing easy finance facilities at a low rate of interest, which has considerably increased the demand for the product. The company has installed a new branch management software to efficiently manage and coordinate activities across their multiple branches and locations.</p> <p>Identify the components of the business environment from the above case study.</p> <p>A. Political and economic environment</p> <p>B. Economic and social environment</p> <p>C. Technological and legal environment</p> <p>D. Economic and technological environment</p>	1
7.		1

	<p>Identify the responsibility that a consumer fulfills when he looks for the quality marks given above:</p> <ul style="list-style-type: none"> A. Assert yourself to ensure that you get a fair deal B. Getting a proper receipt C. Buy only standardised products D. Be honest in your dealings <p>For Visually Impaired Candidates: When a consumer looks for FPO mark while purchasing a bottle of jam or hallmark when purchasing jewellery, which consumer responsibility has he kept in mind:</p> <ul style="list-style-type: none"> A. Assert yourself to ensure that you get a fair deal B. Getting a proper receipt C. Buy only standardised products D. Be honest in your dealings 	1
8.	<p>Read the following statements: Assertion (A) and Reason (R). Choose the correct alternative from those given below:</p> <p>ASSERTION (A): Controlling can prevent deviations. REASON (R): Controlling helps in minimising deviations by taking actions and decisions that reduce their recurrence.</p> <ul style="list-style-type: none"> A. Both Assertion (A) and Reason (R) are true and Reason is the correct explanation of Assertion. B. Both Assertion(A) and Reason (R) are true and Reason is not the correct explanation of Assertion. C. Assertion (A) is true, Reason (R) is false. D. Assertion(A) is false, Reason(R) is true. 	1
9.	<p>‘Joining a job marks the beginning of socialisation of employees at the workplace. The employee should be given a post for which he has been selected.’</p> <p>Place the subsequent steps of staffing in a small organisation in the correct order:</p> <ul style="list-style-type: none"> A. Training and development, promotion and career planning, performance appraisal, compensation B. Performance appraisal, training and development, promotion and career planning, compensation C. Training and development, performance appraisal, promotion and career planning, compensation D. Training and development, performance appraisal, compensation, promotion and career planning 	1
10.	<p>Spiceworks, a company providing financial services to its clients is keeping a close check on the employee’s activities by using biometric and retina scanning as modes of accessing the office premises, in order to ensure greater security of information in the organisation.</p> <p>Choose the correct point of significance of controlling highlighted above:</p> <ul style="list-style-type: none"> A. controlling helps in achievement of organisational goals B. controlling helps in ensuring order and discipline C. controlling helps in improving employees motivation D. controlling enables optimum utilisation of resources 	1

11.	Identify the incorrect statement with respect to 'Investment decision': A. Net working capital refers to excess of current assets over current liabilities B. Current assets are those assets which get converted into cash within one year C. Capital budgeting decisions are irreversible. D. Size of the assets, Profitability and competitiveness are not affected by capital budgeting decisions.	1																				
12.	State Commission has the jurisdiction to entertain complaints where value of goods and services paid as consideration is _____ A. More than ₹1 crore and not more than ₹ 5 crore B. More than ₹10 crore C. Less than ₹1 crore D. More than ₹1 crore and not more than ₹10 crore	1																				
13.	Match the statements given in column I with the characteristic of business environment given in column II <table border="1" data-bbox="318 701 1378 1470"> <thead> <tr> <th></th> <th>COLUMN I</th> <th></th> <th>COLUMN II</th> </tr> </thead> <tbody> <tr> <td>(a)</td> <td>Increased demand of Khakhra and Thepla in the region of Gujarat as compared to Delhi region</td> <td>i.</td> <td>Uncertainty</td> </tr> <tr> <td>(b)</td> <td>Digital academic certificates are issued to students accessible in a secured manner to eliminate undesirable practices like corruption and manipulation of records under Digital India Initiative. Such technological improvements are happening at a very fast pace.</td> <td>ii.</td> <td>Dynamic</td> </tr> <tr> <td>(c)</td> <td>Fashion market is facing both opportunities and challenges. Therefore it is difficult to predict the future of the fashion market.</td> <td>iii.</td> <td>Relativity</td> </tr> <tr> <td>(d)</td> <td>A new government will result in changing government rules, fiscal policies, market conditions etc</td> <td>iv.</td> <td>Interrelatedness</td> </tr> </tbody> </table> <p>Choose the correct option from the following:</p> <p>A. (a)-(iii), (b)-(ii), (c)-(i), (d)-(iv) B. (a)-(ii), (b)-(i), (c)-(iii), (d)-(iv) C. (a)-(iv), (b)-(ii), (c)-(i), (d)-(iii) D. (a)-(iii), (b)-(i), (c)-(ii), (d)-(iv)</p>		COLUMN I		COLUMN II	(a)	Increased demand of Khakhra and Thepla in the region of Gujarat as compared to Delhi region	i.	Uncertainty	(b)	Digital academic certificates are issued to students accessible in a secured manner to eliminate undesirable practices like corruption and manipulation of records under Digital India Initiative. Such technological improvements are happening at a very fast pace.	ii.	Dynamic	(c)	Fashion market is facing both opportunities and challenges. Therefore it is difficult to predict the future of the fashion market.	iii.	Relativity	(d)	A new government will result in changing government rules, fiscal policies, market conditions etc	iv.	Interrelatedness	1
	COLUMN I		COLUMN II																			
(a)	Increased demand of Khakhra and Thepla in the region of Gujarat as compared to Delhi region	i.	Uncertainty																			
(b)	Digital academic certificates are issued to students accessible in a secured manner to eliminate undesirable practices like corruption and manipulation of records under Digital India Initiative. Such technological improvements are happening at a very fast pace.	ii.	Dynamic																			
(c)	Fashion market is facing both opportunities and challenges. Therefore it is difficult to predict the future of the fashion market.	iii.	Relativity																			
(d)	A new government will result in changing government rules, fiscal policies, market conditions etc	iv.	Interrelatedness																			
14.	The process of classification of products into different groups, on the basis of some of the important characteristics such as quality, size, etc. is known as: A. Branding B. Standardisation C. Grading D. Marketing planning	1																				

15.	<p>Shiwakumar runs a legal consultancy firm in Chhattisgarh. Whenever the firm hires new employees, on the first day of joining, they are welcomed to the organisation and are given details about the dress code, lunch timings, introduction to daily operations and fellow colleagues. They are also familiarised with the organisational policies and procedures, emergency exits, evacuation procedure, etc.</p> <p>Name the type of training which is provided by Shiwakumar in his firm.</p> <p>A. Apprenticeship training B. Vestibule training C. Induction training D. Internship training</p>	1
16.	<p>Identify the incorrect statement with respect to Consumer Protection in India.</p> <p>A. It not only includes educating consumers about their rights and responsibilities but also helps in getting their grievances redressed B. It not only requires a judicial machinery for protecting the interest of consumers but also requires the consumers to get together and form themselves into Consumer associations for protection and promotion of their interests. C. It is the moral duty of any business to take care of consumers' interest and avoid any form of exploitation. D. The provisions of Consumer Protection Act came into force from 1981.</p>	1
17.	<p>Identify the decision which is not taken under financial management.</p> <p>A. Dividend Decision B. Capital Budgeting Decision C. Pricing Decision D. Both B. and C.</p>	1
18.	<p>What are the factors that affect financing decisions?</p> <p>(a) Cash flow position of the company (b) Stability of earnings (c) Degree of financial risk (d) Contractual constraints (e) State of capital market (f) Level of competition</p> <p>Choose the correct alternative from the following:</p> <p>A. (b), (c) and (f) B. (d), (e) and (f) C. (a), (c) and (d) D. (a), (c) and (e)</p>	1
19.	<p>Consumers can ask anything regarding the date of manufacturing, MRP, etc, about the product that he intend to buy.</p> <p>Identify the consumer right highlighted in the above lines.</p> <p>A. Right to be informed B. Right to be assured C. Right to be heard D. Right to safety</p>	1
20.	<p>Read the following statements carefully:</p> <p>Statement I: Cost of debt is lower than cost of equity for a company.</p>	1

	<p>Statement II: The objective of financial management is to increase shareholder's wealth.</p> <p>In the light of given statements, choose the correct alternative from the following:</p> <p>A. Both the statements are true. B. Both the statements are false. C. Statement I is true, Statement II is false. D. Statement II is true, Statement I is false.</p>									
21.(A)	State the meaning of single use plans and standing plans	3								
	OR									
21.(B)	State how planning (I) reduces creativity (II) leads to rigidity.	1 ½ 1 ½								
22. (A)	Explain the concept of leadership. Give two situations in which autocratic leadership style is most effective.	3								
	OR									
22. (B)	Explain the concept of communication. Give the meaning of formal and informal communication.	3								
23.	<p>From the following information regarding Aditya Ltd. which is in the business of manufacturing green tea, calculate the Return on Investment and Interest Coverage Ratio of the company: (Show working)</p> <table style="width: 100%; border: none;"> <tr> <td>Earning before interest and tax</td> <td style="text-align: right;">₹ 15,00,000</td> </tr> <tr> <td>10% debentures</td> <td style="text-align: right;">₹ 12,00,000</td> </tr> <tr> <td>Equity Share Capital (₹10 each)</td> <td style="text-align: right;">₹ 18,00,000</td> </tr> <tr> <td>Tax Rate</td> <td style="text-align: right;">40%</td> </tr> </table>	Earning before interest and tax	₹ 15,00,000	10% debentures	₹ 12,00,000	Equity Share Capital (₹10 each)	₹ 18,00,000	Tax Rate	40%	3
Earning before interest and tax	₹ 15,00,000									
10% debentures	₹ 12,00,000									
Equity Share Capital (₹10 each)	₹ 18,00,000									
Tax Rate	40%									
24.	<p>Mr Vivek Vaswani, a foodpreneur combined his passion for food with his entrepreneurial skills and started his innovative fast food outlet OH CHILLI! in 2021. He had started his career as a food blogger and had noticed that numerous Indian consumers were looking for reasonable and pure vegetarian fast food options for dining out. The high end restaurants were not opted by many as they were exorbitantly priced. Though many global fast food chains were running across the country, yet not many outlets offered reasonable and healthy pure vegetarian fast food options to consumers. OH CHILLI! became a pioneer in offering a healthy and delicious variety of food.</p> <p>What came as a surprise for consumers was that even without using onion or garlic in the pasta sauce, marinade and ketchup ,the food could actually taste great. The company witnessed an increase in net profit of 26% in its second financial year and became a market leader.</p> <p>(I) State the concept of business environment. (II) Identify and explain in what way, a good understanding of business environment enabled Mr. Vivek Vaswani to improve the performance of the enterprise.</p>	1 2								
25.	The General manager of a reputed organisation, Mr. Agastaya Lokhande, made the following announcement at the Annual General Meeting of the company- "When we think of a brand, we think of reputation, but the reputation is made or broken by the quality of products and customer representation. If people are miserable, they can't give their best work and the brand suffers. On									

	<p>the contrary, positive results can be observed if there is job satisfaction, effective and efficient functioning.”</p> <p>(I) Identify and explain the feature of management discussed by Mr Agastaya in his announcement.</p> <p>(II) Explain any three reasons that make management important to any organisation.</p>	<p>1</p> <p>3</p>
26. (A)	<p>In order to streamline the selection procedure, so as to minimise the margin of errors, certain tests are carried out that attempt to measure the characteristics of individuals. Explain any four such tests.</p> <p style="text-align: center;">OR</p>	4
26. (B)	<p>Since jobs have become more complex, the importance of employee training has increased. Training programmes provide numerous benefits to workers. Explain any four points that support this statement.</p>	4
27.	<p>When Bhaanupriya joined as technical head of Logic Lotus Innovators, she was keen on increasing the productivity and profitability of the company. However, she observed that the employees were demotivated as no attention was given to their work. Also, the workers were given little freedom to make decisions.</p> <p>Bhaanupriya decided to stimulate the employees by giving each worker T-shirts with their name on it. She also decided to include workers in work committees. This helped in improving the performance of the workers.</p> <p>(I) On the basis of the understanding of Maslow’s Need Hierarchy Theory of motivation, identify the human need that Bhaanupriya has recognised in order to make the subordinates act towards achievement of organisational goals.</p> <p>(II) Identify and explain two incentives that have been provided by Bhanupriya to improve the performance of the employees.</p>	<p>1</p> <p>3</p>
28. (A)	<p>Explain how Planning and controlling are both backward looking, as well as forward looking functions.</p> <p style="text-align: center;">OR</p>	4
28. (B)	<p>The first step in the controlling process is setting up performance standards. Explain the subsequent two steps in the process of controlling.</p>	4
29.	<p>When Chandrashekhar Shukla returned to India after completing a Certificate course in Food Quality Assurance and Quality Control from the Netherlands, he was convinced that he would fulfil his grandfather's dream of converting their 58 acre land into a fertile farm. He started by setting out specific goals and laid down related activities to be performed to achieve the goals. Soon he launched his own company ‘Food and Agribusiness Solutions Private Limited’.</p> <p>He sought to ensure that the future events effectively meet the best interest of the company. He prepared an annual statement for production and sales, based on sales forecasting. He noticed that the farmers grew only paddy due to which land remained idle for the subsequent 8 to 9 months of the year. He identified and assessed various alternatives through which farms could be utilised for the remaining months of the year.</p> <p>Through his accurate vision, judgement and systematic thinking based on analysis of the facts, he presented a scheme to the farmers where both paddy and vegetables could be grown.</p>	4

	Identify and explain the features of one of the functions of Management highlighted above.	
30.	Give any four points of difference between advertising and personal selling.	4
31.	<p>It was established by the Government of India on 12 April 1988 as an interim administrative body to promote orderly and healthy growth of the securities market and for investor protection. It was given statutory status in 1992 through an Act of Parliament.</p> <p>(I) Identify the regulatory body which has been highlighted above.</p> <p>(II) State the three objectives of the regulatory body identified in part (I).</p> <p>(III) State any two functions that are performed for the development of the securities market by the regulatory body identified in part (I).</p>	<p>1</p> <p>3</p> <p>2</p>
32. (A)	<p>Differentiate between functional structure and divisional structure on the basis of:</p> <p>(I) Formation</p> <p>(II) Specialisation</p> <p>(III) Responsibility</p> <p>(IV) Managerial development</p> <p>(V) Cost</p> <p>(VI) Coordination</p>	6
32. (B)	<p style="text-align: center;">OR</p> <p>‘Delegation helps a manager to extend his area of operations as without it, his activities would be restricted to only what he himself can do.’</p> <p>In light of the above statement, explain how effective delegation helps the organisation in achieving objectives.</p>	6
33.	<p>Leena has been appointed as the Operations Manager in a small trading company dealing in garments, with growing online sales. The company has recently rented space in a warehouse to store garments and mail out orders. In order to take over the responsibilities of order fulfilment, Leena promotes an associate, Kushagra to the post of Inventory and Order fulfilment Supervisor. Kushagra has been given the task to assess whether it is best to process orders as they come in or let them accumulate and then to process them in batches. He concludes that accumulating and then processing them in batches is the best way of fulfilling orders, in order to minimise cost and maximise customer satisfaction.</p> <p>Through several readings Leena finds that the standard time taken from the placement of order to the delivery of garments for a batch of 100 pieces is 72 hours. This helped her to determine the labour cost.</p> <p>On the basis of the understanding of concepts of scientific management, identify and explain the techniques used by Leena and Kushagra to improve the performance of the employees.</p>	6
34. (A)	<p>Explain the four elements of marketing mix.</p> <p style="text-align: center;">OR</p>	6
34. (B)	<p>Explain any four factors affecting determination of the price of a product or service.</p>	6

ECONOMICS (030)
CLASS XII (2024-25)
SAMPLE QUESTION PAPER

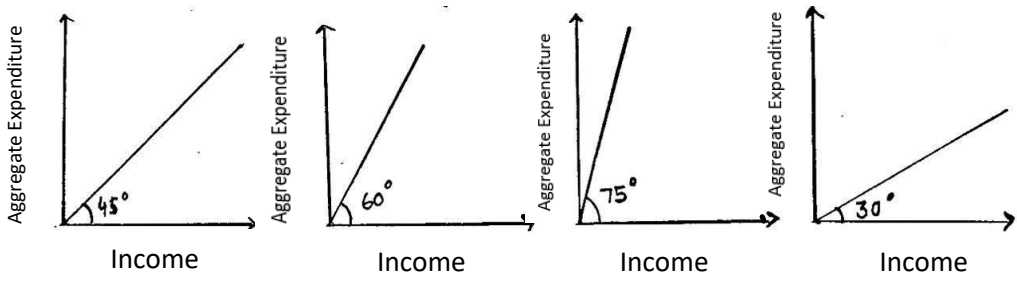
TIME: 3 HOURS

M.M. – 80

GENERAL INSTRUCTIONS:

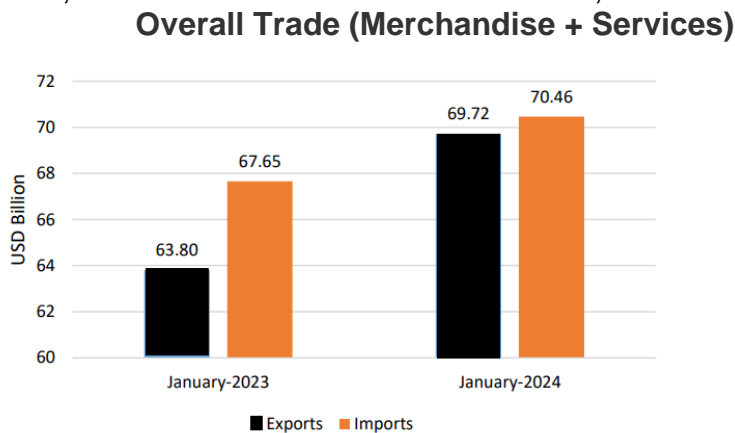
- I. This question paper contains two sections:
Section A – Macro Economics
Section B – Indian Economic Development
- II. This paper contains 20 Multiple Choice Type Questions of 1 mark each.
- III. This paper contains 4 Short Answer Type Questions of 3 marks each to be answered in 60 to 80 words.
- IV. This paper contains 6 Short Answer Type Questions of 4 marks each to be answered in 80 to 100 words.
- V. This paper contains 4 Long Answer Type Questions of 6 marks each to be answered in 100 to 150 words.

Q.NO.	SECTION A – MACRO ECONOMICS	MARKS
1.	<p>Read the following statements: Assertion (A) and Reason (R). Choose the correct option from those given below: Assertion (A): The government can reduce the deflationary gap by purchasing government securities in the open market. Reason (R): The Central Bank purchases government securities in the open market to increase the lending capacity of commercial banks. Options: A. Both Assertion (A) and Reason (R) are true and Reason (R) is the correct explanation of Assertion (A). B. Both Assertion (A) and Reason (R) are true, but Reason (R) is not the correct explanation of Assertion (A). C. Assertion (A) is true, but Reason (R) is false. D. Assertion (A) is false, but Reason (R) is true.</p>	1
2.	<p>“The Cabinet led by Prime Minister has decided that the Central Government will provide free food grains to 81.35 crore (approx.) beneficiaries under the Pradhan Mantri Garib Kalyan Anna Yojana (PMGKAY) for a period of five years with effect from 1st January, 2024.” Source: https://pib.gov.in/PressReleaselframePage.aspx?PRID=1980689 Based on the aforesaid statement, identify the budgetary objective the government is trying to achieve and choose the correct option: A. Reallocation of resources B. Economic stability C. Redistribution of income D. Economic instability</p>	1
3.	<p>To arrive at the value of Gross Value Added at Market Price (GVA_{MP}) _____ must be added to Gross Value Added (GVA) at Basic Prices. (Choose the correct option to fill up the blank) A. Product Taxes B. Net Product Taxes C. Production Taxes D. Net Production Taxes</p>	1
4.	<p>Under the _____ exchange rate system, market forces automatically adjust the surplus and deficit in the Balance of Payments account. (Choose the correct option to fill up the blank)</p>	1

	<p>A. fixed C. managed floating</p> <p>B. flexible D. dirty floating</p>	
5.	<p>From the given diagrams, identify the correct option that indicates the 'Reference Line' passing through the origin drawn at a particular angle.</p> <p>(i) (ii) (iii) (iv)</p>  <p>A. (i) B. (ii) C. (iii) D. (iv)</p> <p>For Visually Impaired Candidates: Under the Keynesian theory, 'Reference Line' is a straight line passing through the origin drawn at an angle of _____. (Choose the correct option to fill up the blank)</p> <p>A. 25° B. 45° C. 55° D. 75°</p>	1
6.	<p>As per the data presented in the Union Budget 2023-24, the total receipts of the government other than borrowings and the total expenditure are estimated at ₹ 27.2 lakh crore and ₹ 45 lakh crore respectively. The value of the _____ deficit would be ₹ 17.8 lakh crore. (Choose the correct option to fill up the blank)</p> <p>A. revenue B. fiscal C. budgetary D. primary</p>	1
7.	<p>Read the following statements carefully: Statement 1: The maximum value of Marginal Propensity to Consume (MPC) can be unity. Statement 2: As the income of an economy increases, the proportionate increase in the level of consumption is always more than the increase in the level of income. In light of the given statements, choose the correct option from the following:</p> <p>A. Statement 1 is true and Statement 2 is false. B. Statement 1 is false and Statement 2 is true. C. Both Statements 1 and 2 are true. D. Both Statements 1 and 2 are false.</p>	1
8.	<p>In a two-sector economy, Aggregate Demand can be determined by adding _____. (Choose the correct option to fill up the blank)</p> <p>A. Autonomous Consumption, Induced Consumption and Induced Investment B. Autonomous Consumption, Autonomous Investment and Induced Investment C. Autonomous Consumption and Autonomous Investment D. Autonomous Consumption, Induced Consumption and Autonomous Investment</p>	1
9.	<p>Read the following statements carefully: Statement 1: Foreign grants-in-aid receipts do not lead to any claim on the government.</p>	1

Statement 2: Disposal of equity by the Public Sector Undertakings in the market may lead to a decrease in the assets of the government.
 In light of the given statements, choose the correct option from the following:
 A. Statement 1 is true and Statement 2 is false.
 B. Statement 1 is false and Statement 2 is true.
 C. Both Statements 1 and 2 are true.
 D. Both Statements 1 and 2 are false.

10. Based on the given diagram:
 The trade under current account during January 2024 reflects a _____ of USD _____ billion. (Choose the correct option to fill up the blank)
 A. surplus, 0.74
 B. surplus, 3.85
 C. deficit, 0.74
 D. deficit, 3.85



Source: <https://commerce.gov.in/wp-content/uploads/2024/02/PIB-Press-Release-January-2024-1.pdf>

For Visually Impaired Candidates:

_____ indicates the situation of Current Account Deficit in the Balance of Payments Account.
 A. Receipts > Payments on current account
 B. Receipts = Payments on current account
 C. Receipts < Payments on current account
 D. Receipts < Payments on capital account

11. (A) On the basis of the given data, estimate the value of Domestic Income (NDP_{FC}):

S. No.	Items	Amount (₹ in crore)
i.	Household Consumption Expenditure	800
ii.	Gross Business Fixed Capital Formation	150
iii.	Gross Residential Construction Investment	120
iv.	Government Final Consumption Expenditure	170
v.	Excess of Imports over Exports	20
vi.	Inventory Investment	140
vii.	Gross Public Investment	500
viii.	Net Indirect Taxes	70
ix.	Net Factor Income From Abroad	(-) 50
x.	Consumption of Fixed Capital	40

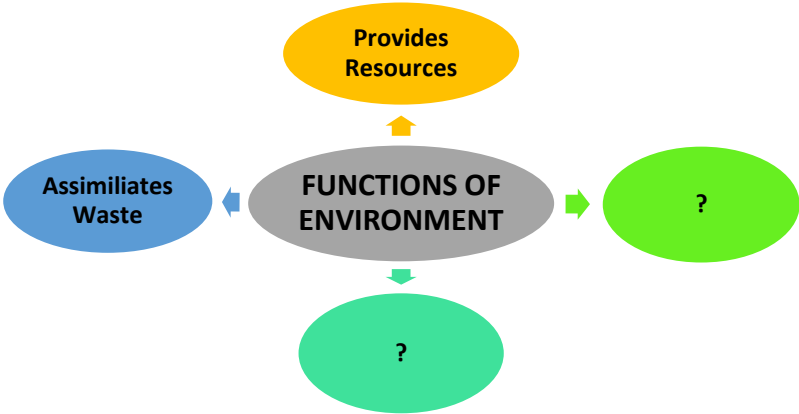
OR

11. (B) State the steps pertaining to the estimation of National Income under the income method.

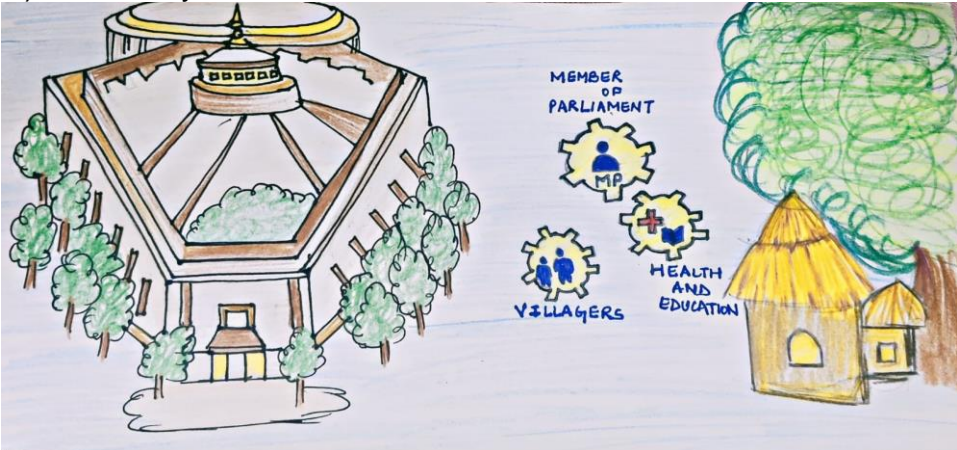
12.	<p>“Tax revenue collection of the government may be categorized under two heads.”</p> <p>State and explain the two heads of tax revenue.</p>	3
13.	<p>(I) ‘Foreign Portfolio Investment (FPI) witnessed a sharp turnaround during 2023-24 with net FPI inflows of US\$ 32.4 billion.’</p> <p>In which sub-account and on which side of the Balance of Payments account the above transaction will be recorded? Give reasons in support of your answer.</p> <p>(II) State the meaning of ‘Balance of Payments Deficit’.</p>	3 1
14. (A)	<p>“Saving curve can be derived from the consumption curve”</p> <p>Justify the statement, citing valid steps with the help of a well-labelled diagram.</p> <p>For Visually Impaired Candidates:</p> <p>“Saving curve can be derived from the consumption curve”</p> <p>Justify the statement, citing valid steps.</p> <p style="text-align: center;">OR</p>	4
14. (B)	<p>For two hypothetical economies A and B, the value of Marginal Propensity to Consume (MPC) stands at 0.6 and 0.8 respectively. Assuming for both the economies, Autonomous Consumption (\bar{c}) to be ₹ 40 crore and Investment Expenditure (I) to be ₹ 100 crore.</p> <p>Calculate:</p> <p>(I) Break-even level of income for Economy A</p> <p>(II) Equilibrium level of income for Economy B</p>	2 2
15.	<p>Read the following text carefully:</p> <p>“Union Finance Minister stated, that investments in infrastructure and productive capacity have a large multiplier impact on growth and employment and in view of this, capital investment outlay is being proposed to increase steeply in the Budget 2023-24 by 1,000 crore.”</p> <p>Based on the given text and common understanding, explain the working process of the increase in investment on the National Income, assuming the Marginal Propensity to Save (MPS) as 20%.</p>	4
16.	<p>Read the following text carefully:</p> <p>As societies developed from hunters and gatherers, the material needs of human beings increased – to build a house, wear clothes, make weapons and implements etc. Since these needs could not be produced individually, people had to purchase them from others. These purchases, for example, were paid initially by barter – a leather skin cloak for a spear. As barter had its limits – how many cloaks for a spear – barter got standardized in terms of metals or cowrie shells. Now people knew the value of both the cloak and the spear in terms of bronze or cowrie shells. This was still barter, as both bronze and shells had intrinsic value (shells were desired for their beauty). This system evolved over time into metal currencies. Gold and silver coinage were the offshoot of this system where they had features of barter (both gold and silver had intrinsic value) as well as money (they were standardized representation of value).</p> <p>In respect of money two facts emerge historically:</p> <ul style="list-style-type: none"> • Money has taken the form of either commodities (which have intrinsic value) or in terms of debt instruments. 	

	<ul style="list-style-type: none"> • Money is usually issued by a sovereign (or a Central Bank as its representative). <p>In modern economies, currency is a form of money that is issued exclusively by some competent authority (Central Bank). It is a liability of the issuing Central Bank and an asset of the holding public. Currency is usually issued in paper (or polymer) form, but the form of currency is not its defining characteristic.</p> <p>In the recent past, the Reserve Bank of India, issued Central Bank Digital Currency (CBDC). A CBDC is the currency issued by a central bank in a digital form. It serves all the purposes of a paper currency in a different form.</p> <p>The introduction of CBDC has the potential to provide significant benefits, such as reduced dependency on cash, lower transaction costs, reduced settlement risk. Introduction of CBDC would possibly lead to a more robust, efficient, trusted, regulated payments option. There are associated risks such as cyber-attacks and technology preparedness, but they need to be carefully evaluated against the potential benefits.</p> <p>Source: https://website.rbi.org.in/web/rbi/-/speeches-interview/central-bank-digital-currency-is-this-the-future-of-money-1111 (adapted and modified)</p> <p>On the basis of the given text and common understanding, answer the following questions:</p> <p>(I) "Over the centuries, money has evolved in various forms." In the light of the given statement, state and discuss briefly any two forms of money.</p> <p>(II) "Various economists have formed a strong opinion that, in the modern times digital currency (like CBDC) is quite essential. However, it comes with its own benefits and potential risks." Do you agree with the given statement, giving valid arguments in support of your answer.</p>	<p>3</p> <p>3</p>									
<p>17. (A)</p>	<p>(I) On the basis of the following hypothetical data: (all figures in ₹ crore)</p> <table border="1" data-bbox="300 1265 1145 1456"> <thead> <tr> <th>Year</th> <th>Nominal GDP</th> <th>Nominal GDP adjusted to base year prices</th> </tr> </thead> <tbody> <tr> <td>2020</td> <td>3,000</td> <td>4,000</td> </tr> <tr> <td>2023</td> <td>4,000</td> <td>4,500</td> </tr> </tbody> </table> <p>Calculate the percentage change in Real Gross Domestic Product in the year 2023 using 2020 as the base year.</p> <p>(II) "The public investment on the construction of a multi-lane flyover may reduce traffic congestion." On the basis of the above statement, discuss its likely impact on Gross Domestic Product (GDP) and welfare in an economy.</p> <p style="text-align: center;">OR</p>	Year	Nominal GDP	Nominal GDP adjusted to base year prices	2020	3,000	4,000	2023	4,000	4,500	<p>3</p> <p>3</p>
Year	Nominal GDP	Nominal GDP adjusted to base year prices									
2020	3,000	4,000									
2023	4,000	4,500									
<p>17. (B)</p>	<p>(I) "Basis of classification of final goods into consumption and capital goods depend on the economic nature of its use." Defend or refute the statement, with the help of a suitable example.</p> <p>(II) 'Natural calamities in the hill states of India have led to massive destruction of capital assets.' Identify the type of loss (depreciation or capital loss) indicated in the aforesaid statement. Give valid reasons in support of your answer.</p>	<p>4</p> <p>2</p>									

SECTION B - INDIAN ECONOMIC DEVELOPMENT

<p>18.</p>	<p>Read the given image carefully:</p>  <p>Choose the correct option which indicates the combination of vital functions performed by the environment.</p> <ol style="list-style-type: none"> Sustains life Provides aesthetic services Generates waste Provides only renewable resources <p>Options:</p> <table border="0"> <tr> <td>A. (i) and (ii)</td> <td>B. (ii) and (iii)</td> </tr> <tr> <td>C. (i) and (iv)</td> <td>D. (i) and (iii)</td> </tr> </table> <p>For Visually Impaired Candidates: Identify, which of the following is not a correct function of environment?</p> <ol style="list-style-type: none"> Elimination of waste Sustenance of life Provide aesthetic services <p>Alternatives:</p> <table border="0"> <tr> <td>A. (i) only</td> <td>B. (ii) only</td> </tr> <tr> <td>C. (ii) & (iii)</td> <td>D. (i) & (ii)</td> </tr> </table>	A. (i) and (ii)	B. (ii) and (iii)	C. (i) and (iv)	D. (i) and (iii)	A. (i) only	B. (ii) only	C. (ii) & (iii)	D. (i) & (ii)	<p>1</p>
A. (i) and (ii)	B. (ii) and (iii)									
C. (i) and (iv)	D. (i) and (iii)									
A. (i) only	B. (ii) only									
C. (ii) & (iii)	D. (i) & (ii)									
<p>19.</p>	<p>Read the following statements carefully:</p> <p>Statement 1: The British policies led to the collapse of India's world-famous handicraft industries.</p> <p>Statement 2: During the colonial rule in India, the contribution of the industrial sector to Gross Value Added (GVA) increased significantly.</p> <p>In light of the given statements, choose the correct option from the following:</p> <ol style="list-style-type: none"> Statement 1 is true and Statement 2 is false. Statement 1 is false and Statement 2 is true. Both Statements 1 and 2 are true. Both Statements 1 and 2 are false. 	<p>1</p>								
<p>20.</p>	<p>Read the following statements: Assertion (A) and Reason (R). Choose the correct option from those given below:</p> <p>Assertion (A): The Education Commission (1964–66) had recommended that at least 4 % of Gross Domestic Product (GDP) be spent on education.</p> <p>Reason (R): The Union and State Governments, have been stepping up expenditures in the education sector over the years to fulfil the objective of attaining cent per cent literacy.</p> <p>Options:</p>	<p>1</p>								

	<p>A. Both Assertion (A) and Reason (R) are true and Reason (R) is the correct explanation of Assertion (A).</p> <p>B. Both Assertion (A) and Reason (R) are true, but Reason (R) is not the correct explanation of Assertion (A).</p> <p>C. Assertion (A) is true, but Reason (R) is false.</p> <p>D. Assertion (A) is false, but Reason (R) is true.</p>	
21.	<p>In the post-independence era, the policymakers of India adopted an economic system that fundamentally implies the coexistence of _____ and _____.</p> <p>(Choose the correct option to fill up the blank)</p> <p>A. small and large-scale industries B. small and medium-scale industries</p> <p>C. public and private sector D. private and foreign sector</p>	1
22.	<p>The institutional structure of rural banking in contemporary India consists of a set of multi-agency institutions, namely, _____.</p> <p>(Choose the correct option to fill up the blank)</p> <p>(i) Regional Rural Banks (ii) Cooperative Banks</p> <p>(iii) Land Development Banks (iv) Commercial Banks</p> <p>Options:</p> <p>A. (i) and (iv) B. (i), (iii) and (iv)</p> <p>C. (i), (ii) and (iii) D. (i), (ii), (iii), and (iv)</p>	1
23.	<p>Identify, which of the following statement is incorrect about the financial sector reform introduced in 1991? (Choose the correct option)</p> <p>A. Enabled the establishment of private sector banks, Indian as well as foreign</p> <p>B. Foreign investment limit in banks was raised to around 74%</p> <p>C. Foreign Institutional Investors were allowed to invest in Indian financial markets</p> <p>D. Change in the role of the Reserve Bank of India from facilitator to regulator</p>	1
24.	<p>China's demographic problem of 4-2-1, resulted in a higher proportion of elderly individuals compared to the younger population. This was primarily due to the implementation of _____.</p> <p>A. Great Leap Forward Campaign</p> <p>B. Great Proletarian Cultural Revolution</p> <p>C. One Child Norm</p> <p>D. Special Economic Zones</p>	1
25.	<p>_____ was setup in 1974 by the Indian government to address two major environmental concerns viz. water and air pollution.</p> <p>(Choose the correct option to fill up the blank)</p> <p>A. State Pollution Control Board B. Central Pollution Control Board</p> <p>C. Brundtland Commission D. Montreal Protocol</p>	1
26.	<p>“Assuming in a hypothetical economy, Real Gross Domestic Product recorded a growth rate of 9% during a fiscal year. However, the economy faced a significant challenge in terms of creating an adequate number of employment opportunities.”</p> <p>Identify the situation indicated in the given statement and choose the correct option.</p>	1

	<p>A. Casualisation of workforce C. Formalisation of workforce</p> <p>B. Informalisation of workforce D. Jobless growth</p>	
27.	<p>During the period 1951-2016, _____ led to an increase in the milk production in India by about ten times. (Choose the correct option to fill up the blank)</p> <p>A. Green Revolution C. Operation Flood</p> <p>B. Golden Revolution D. Industrial Revolution</p>	1
28. (A)	<p>Critically appraise the disinvestment policy initiated by the government during the reforms of 1991.</p> <p style="text-align: center;">OR</p>	3
28. (B)	<p>‘Globalisation is an essential outcome of liberalisation of an economy’. Justify the given statement with a valid explanation.</p>	3
29.	<p>‘To measure the extent of development in an economy, liberty indicators should be considered along with other socio-economic parameters.’ Do you agree with the given statement? Give valid reasons in support of your answer.</p>	3
30.	<p>‘The reform process implemented in the late 1970s, commonly known as China’s open door policy, encompassed a wide range of reforms across sectors like agriculture, investment, industry etc. These reforms played a pivotal role in driving the rapid growth of the Chinese economy over subsequent decades.’ In the light of the given text, discuss any two reforms responsible for the rapid economic growth of China.</p>	4
31. (A)	<p>‘Under the Delhi Declaration, the G-20 nations pledged to reach global net zero emissions approximately by mid-century and to triple global renewable energy capacity by 2030.’ Discuss briefly the rationale behind the commitment by G-20 nations in the direction of achieving sustainable development.</p> <p style="text-align: center;">OR</p>	4
31. (B)	<p>‘It would be unclear to say that, the growth of human capital lays the ground for economic growth of a nation.’ Do you agree with the given statement? Support your answer with valid illustrations.</p>	4
32.	<p>(I) Interpret the given picture based on the Saansad Adarsh Gram Yojana (SAGY) initiated by the Government of India.</p> 	3

	(II) State any two examples of allied activities.	1
	For Visually Impaired Candidates in lieu of 32 (I) : Explain briefly the Saansad Adarsh Gram Yojana (SAGY) initiated by the Government of India.	3
33.	<p>Read the following text carefully: Employment generation has remained one of the top challenges of Indian policymakers, and over the years, this has only become more complex. India has experienced more or less consistent growth in the structure of the output of the economy, especially after the economic reforms which is measured by gross value added. However, the trend in employment did not reveal a consistent and clear pattern. These complexities have led to a wide variation in the conclusions drawn by experts and various studies on workforce and employment.</p> <p>Two major sources of data on the workforce and employment have been the (i) decennial population census and (ii) nationwide quinquennial surveys on employment and unemployment by the erstwhile NSSO under the Ministry of Statistics and Programme Implementation (MoSPI), Government of India. The nationwide Employment and Unemployment (E&U) surveys have been replaced by the Periodic Labour Force Survey (PLFS) conducted by the National Statistical Office (NSO) of MoSPI, which started in the year 2017–18.</p> <p>According to NSO, the PLFS data measure the dynamics in labour force participation, workers to population ratio and the employment status along with related, important parameters for both rural and urban areas.</p> <p>Labour force includes persons who were either working (or employed) or those available for work (or unemployed). Some persons in the labour force are abstained from work for various reasons. Deducting that number from the labour force gives the number of actual workers. These workers are further categorised as persons who are engaged in any economic activity as self-employed or regular wage/salaried and casual labour. The difference between the labour force and the workforce gives the number of unemployed persons.</p> <p>The size of the labour force in the country has increased from 485.3 million in the year 2017–18 to 497.4 million in the year 2018–19. The next year, the labour force increased by 8 per cent and reached 537.9 million. This increase was witnessed across male and female populations as well as rural and urban households. Source: https://www.niti.gov.in/sites/default/files/2022-04/Discussion_Paper_on_Workforce_05042022.pdf (adapted and modified)</p> <p>On the basis of the given text and common understanding, answer the following questions:</p> <p>(I) State any two major sources of data on the workforce and employment.</p> <p>(II) ‘The labour force encompasses a broader category than the workforce.’ Defend or refute the statement, giving valid reasons in support of your answer.</p> <p>(III) ‘Workers can be categorized into different types depending on their status.’</p> <p>In the light of the given statement, state any one type of employment.</p>	<p>2</p> <p>3</p> <p>1</p>

34. (A)	(I) 'Under the Industrial Policy Resolution (IPR) 1956 in India, the system of industrial licensing was introduced to promote regional equality.' Justify the given statement with valid arguments.	4
	(II) Discuss briefly the estimates made by notable scholars regarding the national income and per capita income during the colonial rule in India.	2
	OR	
34. (B)	(I) 'During the colonial period, India's foreign trade was characterized by a large export surplus, however, this did not result in any flow of gold or silver into India.' Justify the given statement with valid arguments.	3
	(II) Explain the rationale behind choosing 'Self-reliance' as a central planning objective in India's development strategy.	3

SAMPLE QUESTION PAPER (2024 - 25)

CLASS- XII

SUBJECT: Mathematics (041)

Time: 3 Hours

Maximum Marks: 80

General Instructions:

Read the following instructions very carefully and strictly follow them:

- (i) This Question paper contains **38** questions. **All** questions are **compulsory**.
- (ii) This Question paper is divided into **five** Sections - **A, B, C, D** and **E**.
- (iii) In **Section A**, Questions no. **1** to **18** are **multiple choice questions (MCQs)** and Questions no. **19** and **20** are **Assertion-Reason based** questions of **1 mark each**.
- (iv) In **Section B**, Questions no. **21** to **25** are **Very Short Answer (VSA)-type** questions, carrying **2 marks each**.
- (v) In **Section C**, Questions no. **26** to **31** are **Short Answer (SA)-type** questions, carrying **3 marks each**.
- (vi) In **Section D**, Questions no. **32** to **35** are **Long Answer (LA)-type** questions, carrying **5 marks each**.
- (vii) In **Section E**, Questions no. **36** to **38** are **Case study-based** questions, carrying **4 marks each**.
- (viii) There is no overall choice. However, an internal choice has been provided in 2 questions in Section B, 3 questions in Section C, 2 questions in Section D and one subpart each in 2 questions of Section E.
- (ix) Use of calculators is **not** allowed.

SECTION-A

[1×20 = 20]

(This section comprises of multiple choice questions (MCQs) of 1 mark each)

Select the correct option (Question 1 - Question 18):

Q.1. If for a square matrix A , $A \cdot (\text{adj}A) = \begin{bmatrix} 2025 & 0 & 0 \\ 0 & 2025 & 0 \\ 0 & 0 & 2025 \end{bmatrix}$, then the value of $|A| + |\text{adj}A|$ is equal to:

- (A) 1 (B) $2025+1$ (C) $(2025)^2 + 45$ (D) $2025 + (2025)^2$

Q.2. Assume X, Y, Z, W and P are matrices of order $2 \times n, 3 \times k, 2 \times p, n \times 3$ and $p \times k$, respectively. Then the restriction on n, k and p so that $PY + WY$ will be defined are:

- (A) $k = 3, p = n$ (B) k is arbitrary, $p = 2$
(C) p is arbitrary, $k = 3$ (D) $k = 2, p = 3$

Q.3. The interval in which the function f defined by $f(x) = e^x$ is strictly increasing, is

- (A) $[1, \infty)$ (B) $(-\infty, 0)$ (C) $(-\infty, \infty)$ (D) $(0, \infty)$

Q.4. If A and B are non-singular matrices of same order with $\det(A) = 5$, then $\det(B^{-1}AB)^2$ is equal to

- (A) 5 (B) 5^2 (C) 5^4 (D) 5^5

Q.5. The value of 'n', such that the differential equation $x^n \frac{dy}{dx} = y(\log y - \log x + 1)$;

(where $x, y \in R^+$) is homogeneous, is

- (A) 0 (B) 1 (C) 2 (D) 3

Q.6. If the points (x_1, y_1) , (x_2, y_2) and $(x_1 + x_2, y_1 + y_2)$ are collinear, then $x_1 y_2$ is equal to

- (A) $x_2 y_1$ (B) $x_1 y_1$ (C) $x_2 y_2$ (D) $x_1 x_2$

Q.7. If $A = \begin{bmatrix} 0 & 1 & c \\ -1 & a & -b \\ 2 & 3 & 0 \end{bmatrix}$ is a skew-symmetric matrix then the value of $a + b + c =$

- (A) 1 (B) 2 (C) 3 (D) 4

Q.8. For any two events A and B , if $P(\bar{A}) = \frac{1}{2}$, $P(\bar{B}) = \frac{2}{3}$ and $P(A \cap B) = \frac{1}{4}$, then $P(\bar{A}/\bar{B})$ equals:

- (A) $\frac{3}{8}$ (B) $\frac{8}{9}$ (C) $\frac{5}{8}$ (D) $\frac{1}{4}$

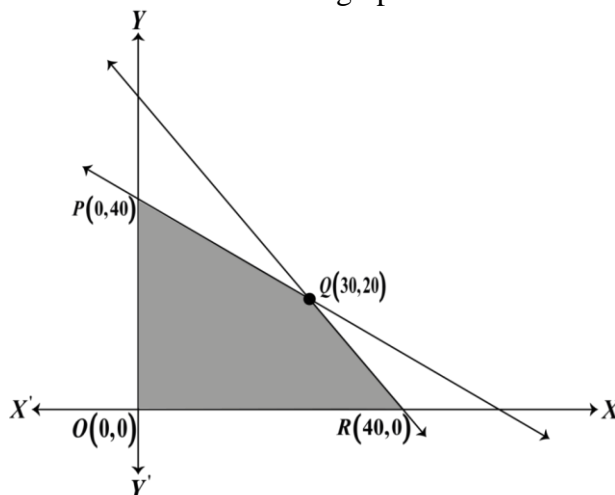
Q.9. The value of α if the angle between $\vec{p} = 2\alpha^2 \hat{i} - 3\alpha \hat{j} + \hat{k}$ and $\vec{q} = \hat{i} + \hat{j} + \alpha \hat{k}$ is obtuse, is

- (A) $R - [0, 1]$ (B) $(0, 1)$ (C) $[0, \infty)$ (D) $[1, \infty)$

Q.10. If $|\vec{a}| = 3$, $|\vec{b}| = 4$ and $|\vec{a} + \vec{b}| = 5$, then $|\vec{a} - \vec{b}| =$

- (A) 3 (B) 4 (C) 5 (D) 8

Q.11. For the linear programming problem (LPP), the objective function is $Z = 4x + 3y$ and the feasible region determined by a set of constraints is shown in the graph:



(Note: The figure is not to scale.)

Which of the following statements is true?

- (A) Maximum value of Z is at $R(40,0)$.
- (B) Maximum value of Z is at $Q(30,20)$.
- (C) Value of Z at $R(40,0)$ is less than the value at $P(0,40)$.
- (D) The value of Z at $Q(30,20)$ is less than the value at $R(40,0)$.

Q.12. $\int \frac{dx}{x^3(1+x^4)^{\frac{1}{2}}}$ equals

- (A) $-\frac{1}{2x^2}\sqrt{1+x^4} + c$
- (B) $\frac{1}{2x}\sqrt{1+x^4} + c$
- (C) $-\frac{1}{4x}\sqrt{1+x^4} + c$
- (D) $\frac{1}{4x^2}\sqrt{1+x^4} + c$

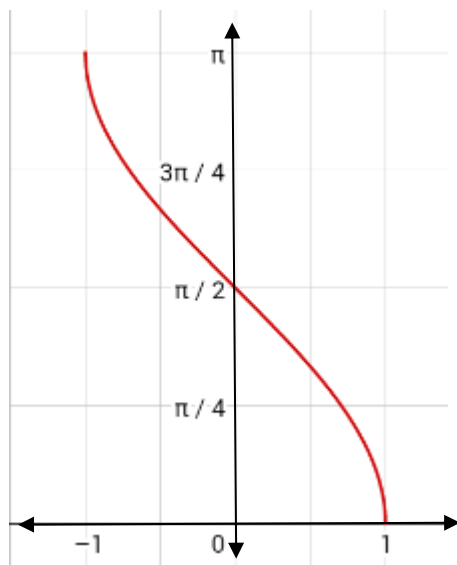
Q.13. $\int_0^{2\pi} \operatorname{cosec}^7 x \, dx =$

- (A) 0
- (B) 1
- (C) 4
- (D) 2π

Q.14. What is the general solution of the differential equation $e^{y'} = x$?

- (A) $y = x \log x + c$
- (B) $y = x \log x - x + c$
- (C) $y = x \log x + x + c$
- (D) $y = x + c$

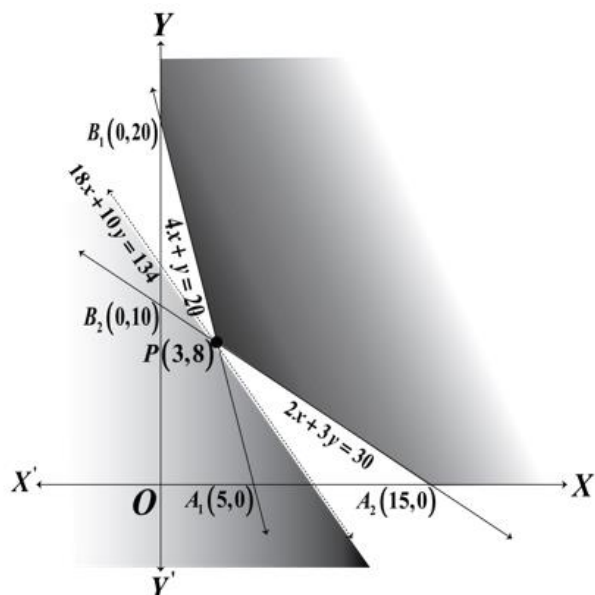
Q.15. The graph drawn below depicts



- (A) $y = \sin^{-1} x$
- (B) $y = \cos^{-1} x$
- (C) $y = \operatorname{cosec}^{-1} x$
- (D) $y = \cot^{-1} x$

Q.16. A linear programming problem (LPP) along with the graph of its constraints is shown below.

The corresponding objective function is: $Z = 18x + 10y$, which has to be minimized. The smallest value of the objective function Z is 134 and is obtained at the corner point $(3, 8)$,



(Note: The figure is not to scale.)

The optimal solution of the above linear programming problem _____.

- (A) does not exist as the feasible region is unbounded.
- (B) does not exist as the inequality $18x + 10y < 134$ does not have any point in common with the feasible region.
- (C) exists as the inequality $18x + 10y > 134$ has infinitely many points in common with the feasible region.
- (D) exists as the inequality $18x + 10y < 134$ does not have any point in common with the feasible region.

Q.17. The function $f: R \rightarrow Z$ defined by $f(x) = [x]$; where $[.]$ denotes the greatest integer function, is

- (A) Continuous at $x = 2.5$ but not differentiable at $x = 2.5$
- (B) Not Continuous at $x = 2.5$ but differentiable at $x = 2.5$
- (C) Not Continuous at $x = 2.5$ and not differentiable at $x = 2.5$
- (D) Continuous as well as differentiable at $x = 2.5$

Q.18. A student observes an open-air Honeybee nest on the branch of a tree, whose plane figure is parabolic shape given by $x^2 = 4y$. Then the area (in sq units) of the region bounded by parabola $x^2 = 4y$ and the line $y = 4$ is

- (A) $\frac{32}{3}$
- (B) $\frac{64}{3}$
- (C) $\frac{128}{3}$
- (D) $\frac{256}{3}$

ASSERTION-REASON BASED QUESTIONS

(Question numbers 19 and 20 are Assertion-Reason based questions carrying 1 mark each. Two statements are given, one labelled Assertion (A) and the other labelled Reason (R). Select the correct answer from the options (A), (B), (C) and (D) as given below.)

- (A) Both (A) and (R) are true and (R) is the correct explanation of (A).
 (B) Both (A) and (R) are true but (R) is not the correct explanation of (A).
 (C) (A) is true but (R) is false.
 (D) (A) is false but (R) is true.

Q.19. Assertion (A): Consider the function defined as $f(x) = |x| + |x - 1|$, $x \in R$. Then $f(x)$

is not differentiable at $x = 0$ and $x = 1$.

Reason (R): Suppose f be defined and continuous on (a, b) and $c \in (a, b)$, then $f(x)$ is not

differentiable at $x = c$ if $\lim_{h \rightarrow 0^-} \frac{f(c+h)-f(c)}{h} \neq \lim_{h \rightarrow 0^+} \frac{f(c+h)-f(c)}{h}$.

Q.20. Assertion (A): The function $f: R - \left\{ (2n + 1)\frac{\pi}{2} : n \in Z \right\} \rightarrow (-\infty, -1] \cup [1, \infty)$ defined by $f(x) = \sec x$ is not one-one function in its domain.

Reason (R): The line $y = 2$ meets the graph of the function at more than one point.

SECTION B

[2×5 = 10]

(This section comprises of 5 very short answer (VSA) type questions of 2 marks each.)

Q.21. If $\cot^{-1}(3x + 5) > \frac{\pi}{4}$, then find the range of the values of x .

Q.22. The cost (in rupees) of producing x items in factory, each day is given by

$$C(x) = 0.00013x^3 + 0.002x^2 + 5x + 2200$$

Find the marginal cost when 150 items are produced.

Q.23. (a) Find the derivative of $\tan^{-1} x$ with respect to $\log x$; (where $x \in (1, \infty)$).

OR

Q.23. (b) Differentiate the following function with respect to x : $(\cos x)^x$; (where $x \in (0, \frac{\pi}{2})$).

Q.24. (a) If vectors $\vec{a} = 2\hat{i} + 2\hat{j} + 3\hat{k}$, $\vec{b} = -\hat{i} + 2\hat{j} + \hat{k}$ and $\vec{c} = 3\hat{i} + \hat{j}$ are such that $\vec{b} + \lambda\vec{c}$ is perpendicular to \vec{a} , then find the value of λ .

OR

Q.24. (b) A person standing at $O(0, 0, 0)$ is watching an aeroplane which is at the coordinate point

$A(4, 0, 3)$. At the same time he saw a bird at the coordinate point $B(0, 0, 1)$. Find the angles which \vec{BA} makes with the x, y and z axes.

Q.25. The two co-initial adjacent sides of a parallelogram are $2\hat{i} - 4\hat{j} - 5\hat{k}$ and $2\hat{i} + 2\hat{j} + 3\hat{k}$. Find its diagonals and use them to find the area of the parallelogram.

(This section comprises of 6 short answer (SA) type questions of 3 marks each.)

Q.26. A kite is flying at a height of 3 metres and 5 metres of string is out. If the kite is moving away horizontally at the rate of 200 cm/s, find the rate at which the string is being released.

Q.27. According to a psychologist, the ability of a person to understand spatial concepts is given by

$$A = \frac{1}{3}\sqrt{t}, \quad \text{where } t \text{ is the age in years, } t \in [5,18].$$

Show that the rate of increase of the ability to understand spatial concepts decreases with age in between 5 and 18.

Q.28. (a) An ant is moving along the vector $\vec{l}_1 = \hat{i} - 2\hat{j} + 3\hat{k}$. Few sugar crystals are kept along the vector $\vec{l}_2 = 3\hat{i} - 2\hat{j} + \hat{k}$ which is inclined at an angle θ with the vector \vec{l}_1 . Then find the angle θ . Also find the scalar projection of \vec{l}_1 on \vec{l}_2 .

OR

Q.28. (b) Find the vector and the cartesian equation of the line that passes through $(-1, 2, 7)$ and is perpendicular to the lines $\vec{r} = 2\hat{i} + \hat{j} - 3\hat{k} + \lambda(\hat{i} + 2\hat{j} + 5\hat{k})$ and $\vec{r} = 3\hat{i} + 3\hat{j} - 7\hat{k} + \mu(3\hat{i} - 2\hat{j} + 5\hat{k})$.

Q.29. (a) Evaluate: $\int \left\{ \frac{1}{\log x} - \frac{1}{(\log x)^2} \right\} dx$; (where $x > 1$).

OR

Q.29. (b) Evaluate : $\int_0^1 x(1-x)^n dx$; (where $n \in N$).

Q.30. Consider the following Linear Programming Problem:

$$\text{Minimise } Z = x + 2y$$

$$\text{Subject to } 2x + y \geq 3, \quad x + 2y \geq 6, \quad x, y \geq 0.$$

Show graphically that the minimum of Z occurs at more than two points

Q.31. (a) The probability that it rains today is **0.4**. If it rains today, the probability that it will rain tomorrow is **0.8**. If it does not rain today, the probability that it will rain tomorrow is **0.7**. If

P_1 : denotes the probability that it does not rain today.

P_2 : denotes the probability that it will not rain tomorrow, if it rains today.

P_3 : denotes the probability that it will rain tomorrow, if it does not rain today.

P_4 : denotes the probability that it will not rain tomorrow, if it does not rain today.

(i) Find the value of $P_1 \times P_4 - P_2 \times P_3$. [2 Marks]

(ii) Calculate the probability of raining tomorrow. [1 Mark]

OR

Q.31. (b) A random variable X can take all non – negative integral values and the probability that X takes

the value r is proportional to 5^{-r} . Find $P(X < 3)$.

SECTION D

[5 × 4 = 20]

(This section comprises of 4 long answer (LA) type questions of 5 marks each)

Q.32. Draw the rough sketch of the curve $y = 20 \cos 2x$; (where $\frac{\pi}{6} \leq x \leq \frac{\pi}{3}$).

Using **integration**, find the area of the region bounded by the curve $y = 20 \cos 2x$ from the ordinates $x = \frac{\pi}{6}$ to $x = \frac{\pi}{3}$ and the x – axis.

Q.33. The equation of the path traversed by the ball headed by the footballer is

$y = ax^2 + bx + c$; (where $0 \leq x \leq 14$ and $a, b, c \in R$ and $a \neq 0$) with respect to a XY-coordinate system in the vertical plane. The ball passes through the points **(2,15)**, **(4,25)** and **(14,15)**. Determine the values of a , b and c by solving the system of linear equations in a , b and c , using matrix method. Also find the equation of the path traversed by the ball.

Q.34. (a) If $f: R \rightarrow R$ is defined by $f(x) = |x|^3$, show that $f''(x)$ exists for all real x and find it.

OR

Q.34. (b) If $(x - a)^2 + (y - b)^2 = c^2$, for some $c > 0$, prove that $\frac{\left[1 + \left(\frac{dy}{dx}\right)^2\right]^{\frac{3}{2}}}{\frac{d^2y}{dx^2}}$ is a constant independent of a and b .

Q.35. (a) Find the shortest distance between the lines l_1 and l_2 whose vector equations are

$$\vec{r} = (-\hat{i} - \hat{j} - \hat{k}) + \lambda(7\hat{i} - 6\hat{j} + \hat{k}) \text{ and } \vec{r} = (3\hat{i} + 5\hat{j} + 7\hat{k}) + \mu(\hat{i} - 2\hat{j} + \hat{k})$$

where λ and μ are parameters.

OR

Q.35. (b) Find the image of the point **(1,2,1)** with respect to the line $\frac{x-3}{1} = \frac{y+1}{2} = \frac{z-1}{3}$. Also find the equation of the line joining the given point and its image.

SECTION- E

[4 × 3 = 12]

(This section comprises of 3 case-study/passage-based questions of 4 marks each with subparts. The first two case study questions have three subparts (i), (ii), (iii) of marks 1, 1, 2 respectively. The third case study question has two subparts of 2 marks each)

Case Study-1

Q.36. Ramesh, the owner of a sweet selling shop, purchased some rectangular card board sheets of dimension **25 cm by 40 cm** to make container packets without top. Let x cm be the length of the side of the square to be cut out from each corner to give that sheet the shape of the container by folding up the flaps.

Based on the above information answer the following questions.

- (i) Express the volume (V) of each container as function of x only. [1 Mark]
- (ii) Find $\frac{dV}{dx}$ [1 Mark]
- (iii) (a) For what value of x , the volume of each container is maximum? [2 Marks]

OR

- (iii) (b) Check whether V has a point of inflection at $x = \frac{65}{6}$ or not? [2 Marks]

Case Study-2

Q.37. An organization conducted bike race under 2 different categories-boys and girls. In all, there were **250** participants. Among all of them finally three from Category 1 and two from Category 2 were selected for the final race. Ravi forms two sets B and G with these participants for his college project.

Let $B = \{b_1, b_2, b_3\}, G = \{g_1, g_2\}$ where B represents the set of boys selected and G the set of girls who were selected for the final race.

Ravi decides to explore these sets for various types of relations and functions.

On the basis of the above information, answer the following questions:

- (i) Ravi wishes to form all the relations possible from B to G . How many such relations are possible? [1 Mark]
- (ii) Write the smallest equivalence relation on G . [1 Mark]
- (iii) (a) Ravi defines a relation from B to B as $R_1 = \{(b_1, b_2), (b_2, b_1)\}$. Write the minimum ordered pairs to be added in R_1 so that it becomes (A) reflexive but not symmetric, (B) reflexive and symmetric but not transitive. [2 Marks]

OR

- (iii) (b) If the track of the final race (for the biker b_1) follows the curve

$x^2 = 4y$; (where $0 \leq x \leq 20\sqrt{2}$ & $0 \leq y \leq 200$), then state whether the track represents a one-one and onto function or not. (Justify). [2 Marks]

Case Study- 3

Q.38. Arka bought two cages of birds: Cage-I contains 5 parrots and 1 owl and Cage –II contains 6 parrots. One day Arka forgot to lock both cages and two birds flew from Cage-I to Cage-II (simultaneously). Then two birds flew back from cage-II to cage-I(simultaneously).

Assume that all the birds have equal chances of flying.

On the basis of the above information, answer the following questions:-

- (i) When two birds flew from Cage-I to Cage-II and two birds flew back from Cage-II to Cage-I then find the probability that the owl is still in Cage-I. **[2 Marks]**
- (ii) When two birds flew from Cage-I to Cage-II and two birds flew back from Cage-II to Cage-I, the owl is still seen in Cage-I, what is the probability that one parrot and the owl flew from Cage-I to Cage-II? **[2 Marks]**

SAMPLE QUESTION PAPER (THEORY)
CLASS: XII SESSION: 2024-25
COMPUTER SCIENCE (083)

Time allowed: 3 Hours

Maximum Marks: 70

General Instructions:

- This question paper contains 37 questions.
- All questions are compulsory. However, internal choices have been provided in some questions. Attempt only one of the choices in such questions
- The paper is divided into 5 Sections- A, B, C, D and E.
- Section A consists of 21 questions (1 to 21). Each question carries 1 Mark.
- Section B consists of 7 questions (22 to 28). Each question carries 2 Marks.
- Section C consists of 3 questions (29 to 31). Each question carries 3 Marks.
- Section D consists of 4 questions (32 to 35). Each question carries 4 Marks.
- Section E consists of 2 questions (36 to 37). Each question carries 5 Marks.
- All programming questions are to be answered using Python Language only.
- In case of MCQ, text of the correct answer should also be written.

Q No.	Section-A (21 x 1 = 21 Marks)	Marks
1.	State True or False: The Python interpreter handles logical errors during code execution.	(1)
2.	Identify the output of the following code snippet: <pre>text = "PYTHONPROGRAM" text=text.replace('PY', '#') print(text)</pre> <p>(A) #THONPROGRAM (B) ##THON#ROGRAM (C) #THON#ROGRAM (D) #YTHON#ROGRAM</p>	(1)
3.	Which of the following expressions evaluates to False? (A) not(True) and False (B) True or False (C) not(False and True) (D) True and not(False)	(1)
4.	What is the output of the expression? <pre>country='International' print(country.split("n"))</pre> <p>(A) ('I', 'ter', 'atio', 'al') (B) ['I', 'ter', 'atio', 'al'] (C) ['I', 'n', 'ter', 'n', 'atio', 'n', 'al'] (D) Error</p>	(1)

5.	<p>What will be the output of the following code snippet?</p> <pre>message= "World Peace" print(message[-2::-2])</pre>	(1)
6.	<p>What will be the output of the following code?</p> <pre>tuple1 = (1, 2, 3) tuple2 = tuple1 tuple1 += (4,) print(tuple1 == tuple2)</pre> <p>(A) True (B) False (C) tuple1 (D) Error</p>	(1)
7.	<p>If my_dict is a dictionary as defined below, then which of the following statements will raise an exception?</p> <pre>my_dict = {'apple': 10, 'banana': 20, 'orange': 30}</pre> <p>(A) my_dict.get('orange') (B) print(my_dict['apple', 'banana']) (C) my_dict['apple']=20 (D) print(str(my_dict))</p>	(1)
8.	<p>What does the list.remove(x) method do in Python?</p> <p>(A) Removes the element at index x from the list (B) Removes the first occurrence of value x from the list (C) Removes all occurrences of value x from the list (D) Removes the last occurrence of value x from the list</p>	(1)
9.	<p>If a table which has one Primary key and two alternate keys. How many Candidate keys will this table have?</p> <p>(A) 1 (B) 2 (C) 3 (D) 4</p>	(1)
10.	<p>Write the missing statement to complete the following code:</p> <pre>file = open("example.txt", "r") data = file.read(100) _____ #Move the file pointer to the beginning of the file next_data = file.read(50) file.close()</pre>	(1)
11.	<p>State whether the following statement is True or False: The finally block in Python is executed only if no exception occurs in the try block.</p>	(1)

12.	<p>What will be the output of the following code?</p> <pre> c = 10 def add(): global c c = c + 2 print(c,end='#') add() c=15 print(c,end='%') </pre> <p>(A) 12%15# (B) 15#12% (C) 12#15% (D) 12%15#</p>	(1)
13.	Which SQL command can change the degree of an existing relation?	(1)
14.	<p>What will be the output of the query?</p> <pre> SELECT * FROM products WHERE product_name LIKE 'App%'; </pre> <p>(A) Details of all products whose names start with 'App' (B) Details of all products whose names end with 'App' (C) Names of all products whose names start with 'App' (D) Names of all products whose names end with 'App'</p>	(1)
15.	<p>In which datatype the value stored is padded with spaces to fit the specified length.</p> <p>(A) DATE (B) VARCHAR (C) FLOAT (D) CHAR</p>	(1)
16.	<p>Which aggregate function can be used to find the cardinality of a table?</p> <p>(A) sum() (B) count() (C) avg() (D) max()</p>	(1)
17.	<p>Which protocol is used to transfer files over the Internet?</p> <p>(A) HTTP (B) FTP (C) PPP (D) HTTPS</p>	(1)

18.	Which network device is used to connect two networks that use different protocols? (A) Modem (B) Gateway (C) Switch (D) Repeater	(1)
19.	Which switching technique breaks data into smaller packets for transmission, allowing multiple packets to share the same network resources.	(1)
	Q20 and Q21 are Assertion(A) and Reason(R) based questions. Mark the correct choice as: (A) Both A and R are true and R is the correct explanation for A (B) Both A and R are true and R is not the correct explanation for A (C) A is True but R is False (D) A is False but R is True	
20.	Assertion (A): Positional arguments in Python functions must be passed in the exact order in which they are defined in the function signature. Reasoning (R): This is because Python functions automatically assign default values to positional arguments.	(1)
21.	Assertion (A): A SELECT command in SQL can have both WHERE and HAVING clauses. Reasoning (R): WHERE and HAVING clauses are used to check conditions, therefore, these can be used interchangeably.	(1)
Q No	Section-B (7 x 2=14 Marks)	Marks
22.	How is a mutable object different from an immutable object in Python? Identify one mutable object and one immutable object from the following: (1,2), [1,2], {1:1,2:2}, '123'	(2)
23.	Give two examples of each of the following: (I) Arithmetic operators (II) Relational operators	(2)
24.	If L1=[1,2,3,2,1,2,4,2, . . .], and L2=[10,20,30, . . .], then (Answer using builtin functions only) (I) A) Write a statement to count the occurrences of 4 in L1. OR B) Write a statement to sort the elements of list L1 in ascending order.	(2)

	<p>(II)</p> <p>A) Write a statement to insert all the elements of L2 at the end of L1.</p> <p style="text-align: center;">OR</p> <p>B) Write a statement to reverse the elements of list L2.</p>					
25.	<p>Identify the correct output(s) of the following code. Also write the minimum and the maximum possible values of the variable b.</p> <pre>import random a="Wisdom" b=random.randint(1,6) for i in range(0,b,2): print(a[i],end='#')</pre> <table border="1" data-bbox="300 723 1345 857"> <tr> <td data-bbox="300 723 810 790">(A) W#</td> <td data-bbox="810 723 1345 790">(B) W##</td> </tr> <tr> <td data-bbox="300 790 810 857">(C) W#s#</td> <td data-bbox="810 790 1345 857">(D) W###s#</td> </tr> </table>	(A) W#	(B) W##	(C) W#s#	(D) W###s#	(2)
(A) W#	(B) W##					
(C) W#s#	(D) W###s#					
26.	<p>The code provided below is intended to swap the first and last elements of a given tuple. However, there are syntax and logical errors in the code. Rewrite it after removing all errors. Underline all the corrections made.</p> <pre>def swap_first_last(tup) if len(tup) < 2: return tup new_tup = (tup[-1],) + tup[1:-1] + (tup[0]) return new_tup result = swap_first_last((1, 2, 3, 4)) print("Swapped tuple: " result)</pre>	(2)				
27.	<p>(I)</p> <p>A) What constraint should be applied on a table column so that duplicate values are not allowed in that column, but NULL is allowed.</p> <p style="text-align: center;">OR</p> <p>B) What constraint should be applied on a table column so that NULL is not allowed in that column, but duplicate values are allowed.</p>	(2)				

	<p>(II)</p> <p>A) Write an SQL command to remove the Primary Key constraint from a table, named MOBILE. M_ID is the primary key of the table.</p> <p style="text-align: center;">OR</p> <p>B) Write an SQL command to make the column M_ID the Primary Key of an already existing table, named MOBILE.</p>	
28.	<p>A) List one advantage and one disadvantage of star topology.</p> <p style="text-align: center;">OR</p> <p>B) Expand the term SMTP. What is the use of SMTP?</p>	(2)

Q No.	Section-C (3 x 3 = 9 Marks)	Marks
29.	<p>A) Write a Python function that displays all the words containing @cmail from a text file "Emails.txt".</p> <p style="text-align: center;">OR</p> <p>B) Write a Python function that finds and displays all the words longer than 5 characters from a text file "Words.txt".</p>	(3)
30.	<p>A) You have a stack named BooksStack that contains records of books. Each book record is represented as a list containing book_title, author_name, and publication_year. Write the following user-defined functions in Python to perform the specified operations on the stack BooksStack:</p> <p>(I) push_book(BooksStack, new_book): This function takes the stack BooksStack and a new book record new_book as arguments and pushes the new book record onto the stack.</p> <p>(II) pop_book(BooksStack): This function pops the topmost book record from the stack and returns it. If the stack is already empty, the function should display "Underflow".</p> <p>(III) peep(BookStack): This function displays the topmost element of the stack without deleting it. If the stack is empty, the function should display 'None'.</p> <p style="text-align: center;">OR</p> <p>(B) Write the definition of a user-defined function `push_even(N)` which accepts a list of integers in a parameter `N` and pushes all those integers which are even from the list `N` into a Stack named `EvenNumbers`. Write function pop_even() to pop the topmost number from the stack and returns it. If the stack is already empty, the function should display "Empty". Write function Disp_even() to display all element of the stack without deleting them. If the stack is empty, the function should display 'None'.</p>	(3)

For example:
 If the integers input into the list `VALUES` are:
 [10, 5, 8, 3, 12]
 Then the stack `EvenNumbers` should store:
 [10, 8, 12]

31. Predict the output of the following code:

```
d = {"apple": 15, "banana": 7, "cherry": 9}
str1 = ""
for key in d:
    str1 = str1 + str(d[key]) + "@" + "\n"
str2 = str1[:-1]
print(str2)
```

OR

Predict the output of the following code:

```
line=[4,9,12,6,20]
for I in line:
    for j in range(1,I%5):
        print(j, '#', end="")
    print()
```

(3)

Q No.	Section-D (4 x 4 = 16 Marks)	Marks
-------	-------------------------------	-------

32. Consider the table ORDERS as given below

O_Id	C_Name	Product	Quantity	Price
1001	Jitendra	Laptop	1	12000
1002	Mustafa	Smartphone	2	10000
1003	Dhwani	Headphone	1	1500

Note: The table contains many more records than shown here.

A) Write the following queries:

- (I) To display the total Quantity for each Product, excluding Products with total Quantity less than 5.
- (II) To display the orders table sorted by total price in descending order.
- (III) To display the distinct customer names from the Orders table.

(4)

	<p>(IV) Display the sum of Price of all the orders for which the quantity is null.</p> <p style="text-align: center;">OR</p> <p>B) Write the output</p> <p>(I) <code>Select c_name, sum(quantity) as total_quantity from orders group by c_name;</code></p> <p>(II) <code>Select * from orders where product like '%phone%';</code></p> <p>(III) <code>Select o_id, c_name, product, quantity, price from orders where price between 1500 and 12000;</code></p> <p>(IV) <code>Select max(price) from orders;</code></p>																																											
33.	<p>A csv file "Happiness.csv" contains the data of a survey. Each record of the file contains the following data:</p> <ul style="list-style-type: none"> ● Name of a country ● Population of the country ● Sample Size (<i>Number of persons who participated in the survey in that country</i>) ● Happy (<i>Number of persons who accepted that they were Happy</i>) <p>For example, a sample record of the file may be: ['Signiland', 5673000, 5000, 3426]</p> <p>Write the following Python functions to perform the specified operations on this file:</p> <p>(I) Read all the data from the file in the form of a list and display all those records for which the population is more than 5000000.</p> <p>(II) Count the number of records in the file.</p>	(4)																																										
34.	<p>Saman has been entrusted with the management of Law University Database. He needs to access some information from FACULTY and COURSES tables for a survey analysis. Help him extract the following information by writing the desired SQL queries as mentioned below.</p> <p style="text-align: center;">Table: FACULTY</p> <table border="1" style="margin-left: auto; margin-right: auto;"> <thead> <tr> <th>F_ID</th> <th>FName</th> <th>LName</th> <th>Hire_Date</th> <th>Salary</th> </tr> </thead> <tbody> <tr> <td>102</td> <td>Amit</td> <td>Mishra</td> <td>12-10-1998</td> <td>12000</td> </tr> <tr> <td>103</td> <td>Nitin</td> <td>Vyas</td> <td>24-12-1994</td> <td>8000</td> </tr> <tr> <td>104</td> <td>Rakshit</td> <td>Soni</td> <td>18-5-2001</td> <td>14000</td> </tr> <tr> <td>105</td> <td>Rashmi</td> <td>Malhotra</td> <td>11-9-2004</td> <td>11000</td> </tr> <tr> <td>106</td> <td>Sulekha</td> <td>Srivastava</td> <td>5-6-2006</td> <td>10000</td> </tr> </tbody> </table> <p style="text-align: center;">Table: COURSES</p> <table border="1" style="margin-left: auto; margin-right: auto;"> <thead> <tr> <th>C_ID</th> <th>F_ID</th> <th>CName</th> <th>Fees</th> </tr> </thead> <tbody> <tr> <td>C21</td> <td>102</td> <td>Grid Computing</td> <td>40000</td> </tr> <tr> <td>C22</td> <td>106</td> <td>System Design</td> <td>16000</td> </tr> </tbody> </table>	F_ID	FName	LName	Hire_Date	Salary	102	Amit	Mishra	12-10-1998	12000	103	Nitin	Vyas	24-12-1994	8000	104	Rakshit	Soni	18-5-2001	14000	105	Rashmi	Malhotra	11-9-2004	11000	106	Sulekha	Srivastava	5-6-2006	10000	C_ID	F_ID	CName	Fees	C21	102	Grid Computing	40000	C22	106	System Design	16000	(4)
F_ID	FName	LName	Hire_Date	Salary																																								
102	Amit	Mishra	12-10-1998	12000																																								
103	Nitin	Vyas	24-12-1994	8000																																								
104	Rakshit	Soni	18-5-2001	14000																																								
105	Rashmi	Malhotra	11-9-2004	11000																																								
106	Sulekha	Srivastava	5-6-2006	10000																																								
C_ID	F_ID	CName	Fees																																									
C21	102	Grid Computing	40000																																									
C22	106	System Design	16000																																									

	<table border="1"> <tr> <td>C23</td> <td>104</td> <td>Computer Security</td> <td>8000</td> </tr> <tr> <td>C24</td> <td>106</td> <td>Human Biology</td> <td>15000</td> </tr> <tr> <td>C25</td> <td>102</td> <td>Computer Network</td> <td>20000</td> </tr> <tr> <td>C26</td> <td>105</td> <td>Visual Basic</td> <td>6000</td> </tr> </table> <p>(I) To display complete details (from both the tables) of those Faculties whose salary is less than 12000.</p> <p>(II) To display the details of courses whose fees is in the range of 20000 to 50000 (both values included).</p> <p>(III) To increase the fees of all courses by 500 which have "Computer" in their Course names.</p> <p>(IV) (A) To display names (FName and LName) of faculty taking System Design.</p> <p style="text-align: center;">OR</p> <p>(B) To display the Cartesian Product of these two tables.</p>	C23	104	Computer Security	8000	C24	106	Human Biology	15000	C25	102	Computer Network	20000	C26	105	Visual Basic	6000	
C23	104	Computer Security	8000															
C24	106	Human Biology	15000															
C25	102	Computer Network	20000															
C26	105	Visual Basic	6000															

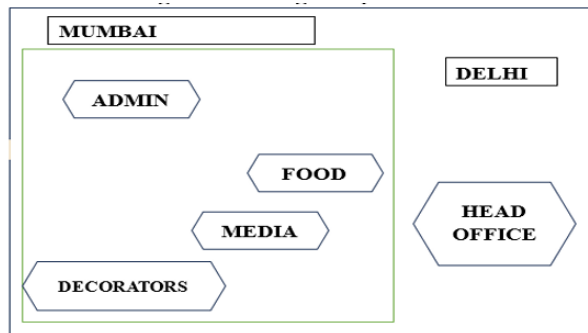
35.	<p>A table, named STATIONERY, in ITEMDB database, has the following structure:</p> <table border="1"> <thead> <tr> <th>Field</th> <th>Type</th> </tr> </thead> <tbody> <tr> <td>itemNo</td> <td>int(11)</td> </tr> <tr> <td>itemName</td> <td>varchar(15)</td> </tr> <tr> <td>price</td> <td>float</td> </tr> <tr> <td>qty</td> <td>int(11)</td> </tr> </tbody> </table> <p>Write the following Python function to perform the specified operation: AddAndDisplay(): To input details of an item and store it in the table STATIONERY. The function should then retrieve and display all records from the STATIONERY table where the Price is greater than 120.</p> <p>Assume the following for Python-Database connectivity: Host: localhost, User: root, Password: Pencil</p>	Field	Type	itemNo	int(11)	itemName	varchar(15)	price	float	qty	int(11)	(4)
Field	Type											
itemNo	int(11)											
itemName	varchar(15)											
price	float											
qty	int(11)											

Q.No.	SECTION E (2 X 5 = 10 Marks)	Marks
36.	<p>Surya is a manager working in a recruitment agency. He needs to manage the records of various candidates. For this, he wants the following information of each candidate to be stored:</p> <ul style="list-style-type: none"> - Candidate_ID – integer - Candidate_Name – string - Designation – string - Experience – float <p>You, as a programmer of the company, have been assigned to do this job for Surya.</p> <p>(I) Write a function to input the data of a candidate and append it in a binary file.</p>	(5)

(II) Write a function to update the data of candidates whose experience is more than 10 years and change their designation to "Senior Manager".
 (III) Write a function to read the data from the binary file and display the data of all those candidates who are not "Senior Manager".

37.

Event Horizon Enterprises is an event planning organization. It is planning to set up its India campus in Mumbai with its head office in Delhi. The Mumbai campus will have four blocks/buildings - ADMIN, FOOD, MEDIA, DECORATORS. You, as a network expert, need to suggest the best network-related solutions for them to resolve the issues/problems mentioned in points (I) to (V), keeping in mind the distances between various blocks/buildings and other given parameters.



Block to Block distances (in Mtrs.)

From	To	Distance
ADMIN	FOOD	42 m
ADMIN	MEDIA	96 m
ADMIN	DECORATORS	48 m
FOOD	MEDIA	58 m
FOOD	DECORATORS	46 m
MEDIA	DECORATORS	42 m

Distance of Delhi Head Office from Mumbai Campus = 1500 km

Number of computers in each of the blocks/Center is as follows:

ADMIN	30
FOOD	18
MEDIA	25
DECORATORS	20
DELHI HEAD OFFICE	18

(5)

	<p>(I) Suggest the most appropriate location of the server inside the MUMBAI campus. Justify your choice.</p> <p>(II) Which hardware device will you suggest to connect all the computers within each building?</p> <p>(III) Draw the cable layout to efficiently connect various buildings within the MUMBAI campus. Which cable would you suggest for the most efficient data transfer over the network?</p> <p>(IV) Is there a requirement of a repeater in the given cable layout? Why/ Why not?</p> <p>(V) A) What would be your recommendation for enabling live visual communication between the Admin Office at the Mumbai campus and the DELHI Head Office from the following options:</p> <ul style="list-style-type: none">a) Video Conferencingb) Emailc) Telephonyd) Instant Messaging <p style="text-align: center;">OR</p> <p>B) What type of network (PAN, LAN, MAN, or WAN) will be set up among the computers connected in the MUMBAI campus?</p>	
--	---	--

PHYSICAL EDUCATION (048)

Sample Paper
Class XII (2024-25)

TIME ALLOWED: 3 HRS

MAX. MARKS: 70

GENERAL INSTRUCTIONS:

- 1) The question paper consists of 5 sections and 37 Questions.
- 2) Section A consists of question 1-18 carrying 1 mark each and is multiple choice questions. All questions are compulsory.
- 3) Sections B consist of questions 19-24 carrying 2 marks each and are very short answer types and should not exceed 60-90 words. Attempt any 5.
- 4) Sections C consist of Question 25-30 carrying 3 marks each and are short answer types and should not exceed 100-150 words. Attempt any 5.
- 5) Sections D consist of Question 31-33 carrying 4 marks each and are case studies. There is internal choice available.
- 6) Section E consists of Question 34-37 carrying 5 marks each and are short answer types and should not exceed 200-300 words. Attempt any 3.

(SECTION -A)

- Q1. How many total matches will be played in a knock out fixture of 19 teams 1
A. 18 B. 17 C. 20 D. 16
- Q2. Given below are the two statements labeled Assertion (A) and Reason (R). Read 1
the statements and choose the appropriate option from the options given below:
Assertion: The knock out tournament is an elimination tournament
Reason: In knock out tournament, winner of each match advances in the tournament and the loser gets eliminated.
In the context of the above two statements, which one of the following is correct?
A. Both (A) and (R) are true and (R) is the correct explanation of (A).
B. Both (A) and (R) are true, but (R) is not the correct explanation of (A).
C. (A) is true, but (R) is false.
D. (A) is false, but (R) is true

- Q3. Match the following: 1

List I	List II
I Knock Knee	1 Increase exaggeration of backward curve
II Kyphosis	2 Wide gap between the knees when standing with feet together
III Lordosis	3 Knees touch each other in normal standing position
IV Bow legs	4 Inward curvature of the spine

- A. I-3, II-1, III-4, IV-2
- B. I-1, II-3, III-4, IV-2
- C. I-4, II-2, III-1, IV-3
- D. I-2, II-3, III-4, IV-1

Q4. For developing muscles, which nutrient should be increase in diet

- A. Vitamins
- B. Protein
- C. Minerals
- D. Carbohydrates

Q5. Identify the asana:

1



- A. Paschimottanasana
- B. Halasana
- C. Vajrasana
- D. Dhanurasana

Q6. Which asana is pose like cobra?

1

- A. Bhujangasana
- B. Dhanurasana
- C. Vajrasana
- D. Ardhamatsyendrasana

Q7. Deaflympics Games was first organized in the year.....

1

- A. 1896
- B. 1960
- C. 1924
- D. 1951

Q8. Menarche is defined as the:

1

- A. Ending of menstrual period of women
- B. Beginning of menstrual period in women
- C. Time of pregnancy
- D. Missing of menstrual cycle

Q9. Which of the following are fat soluble vitamins

1

- A. Vitamin d & k
- B. Vitamin b & c
- C. Vitamin a & e
- D. Both option a & c

Q10. Match the following: 1

I Plate Tapping Test	1. Upper body strength boys
II Push up	2. Reaction time
III Partial Curl up	3. Upper body strength girls
IV Modified pushup	4. Abdominal strength

- A. I-2, II-1, III-4, IV-3
- B. I-2, II-3, III-1, IV-4
- C. I-1, II-3, III-2, IV-4
- D. I-2, II-3, III-4, IV-1

Q11. Which of the following is a physiological factor determining flexibility? 1

- A. Bone density
- B. Joint structure
- C. Cardiac output
- D. Tidal Volume

Q12. The ability to tolerate higher concentration of Can help in improving 1
endurance performance.

- A. Lactic acid
- B. Hydrochloric acid
- C. acetic acid
- D. Sulphuric acid

Q13. If a ball is hit and it is stop by gravitational force, this is an example of which 1
law of Motion.

- A. Law of Inertia
- B. Law of acceleration
- C. Law of action and reaction
- D. Both a & b

Q14. In which of the following sport friction plays the least important role. 1

- A. Car race
- B. Football
- C. Ice skating
- D. Hockey

Q15. Instrumental aggression is related to 1

- A. Accepting defeat
- B. Achieving goal
- C. Only performance
- D. Hurting someone to gain something

Q16. Given below are the two statements labeled Assertion (A) and Reason (R). 1

Assertion: Aggression is part of human behavior and is necessary for an individual to live and struggle for higher achievements

Reason: Aggression is inevitable and inseparable in sport activities

In the context of the above two statements, which one of the following is correct?

- A. Both (A) and (R) are true and (R) is the correct explanation of (A).

- B. Both (A) and (R) are true, but (R) is not the correct explanation of (A).
- C. (A) is true, but (R) is false.
- D. (A) is false, but (R) is true

Q17. Which of these is a type of endurance? 1
 A. Static C. Dynamic
 B. Specific D. Relative

Q18. Which type of coordinative ability is required in game like judo and wrestling 1
 B. Orientation ability
 C. Coupling ability
 D. Adaptation ability
 E. Differentiation ability

(SECTION B- Attempt any 5)

Q19. Enlist any two-exercise guideline by WHO for different age groups. 2
 Q20. How we can say that protein is an essential component of diet? 2
 Q21. Mention the test performed on 9 to 18 yrs. of age group in SAI Khelo
 India fitness test and explain any one? 1+1
 Q22. List down the types of bone injuries 2
 Q23. What do you understand by the term goal setting 2
 Q24. Define Flexibility and list down its type. 1+1

(SECTION C- Attempt any 5)

Q25. Specify the purpose of specific sports programme organised for community services. 3
 Q26. What are the health problem face by a woman due to female athlete triad in its sports and athletic performance. 3
 Q27. Write in detail the aims and objectives of special Olympic Bharat. 3
 Q28. Differentiate between nutritive and nonnutritive components of a diet on the basis of their functions. 1.5+1.5
 Q29. With the help of suitable sports example explain the application of Newtons 3
 third law in sports.
 Q30. How we can enhance the performance with the help of self-talk and self-esteem. 1.5+1.5

(SECTION D)



Q31.

- I. Choose the function of boarding committee 1
- A. To take teams to the venue of match
 - B. To provide them meals
 - C. To take care of their stay
 - D. To arrange opening ceremony
- II. What is the work of ceremony committee 1
- A. To take teams to the venue of match
 - B. To provide them meals
 - C. To take care of their stay
 - D. To arrange opening ceremony
- III. Ground and equipment committee should not perform 1
- A. To arrange teams match venues
 - B. To provide them meals
 - C. To take care of proper officiating
 - D. To make fixtures
- IV. Why committees are required? 1
- A. To organize the event in perfect manner
 - B. To distribute the work
 - C. To make the best use of resources
 - D. All of the above

(Questions for Visually impaired)

Ram is a secretary of state basketball association. He has given the responsibility to organize a sub-junior national tournament. He wants to organize the event at large scale and start distributing the work in various committees. He delegates the duties to different individuals with authority and responsibility.

(Answer the following questions on the basis of above paragraph)

- I. Which committee is responsible to make the event awareness: -
- A. Publicity Committee
 - B. Hospitality
 - C. Registration committee
 - D. Transports

- II. is the process of identifying and grouping the work to be performed.
- A. Planning
 - B. Directing
 - C. Organising
 - D. Controlling

- III. The reception committee for the tournament is responsible for _____
- A. Welcoming the participants
 - B. Arranging accommodation and meals for the participants
 - C. Proper upkeep of the venues
 - D. Welcoming the chief guest and spectators at the opening and closing ceremony

- IV. If the responsibility of a committee is to fix venue, date and timing of the sports events, it is a _____
- A. Post meeting committee
 - B. Pre meet committee
 - C. During meet committee
 - D. All the above



designed by freepik

Q32.

- I. The first paralympics was organise in
- A. 1960
 - B. 1970
 - C. 1965
 - D. 1985
- II. Special education is a branch of education that deals with
- A. . Educating children in special schools
 - B. Instructions designing for students with special needs
 - C. To provide opportunity of special education
 - D. More than one of the above
- III. Why is it called the Paralympics?
- A. The first competition was held in Paraguay
 - B. It was originally for paramilitary soldiers injured in WW2
 - C. The event runs parallel with the Olympics
 - D. It's an event for paraplegics
- IV. What is the motto of the Paralympic Games
- A. Spirit in motion
 - B. Citius, Altius, Fortius"
 - C. "Faster, Higher, Stronger
 - D. Diversity, Equality, Inclusion"

(Question for Visually Impaired)

Read the paragraph and answer the following question

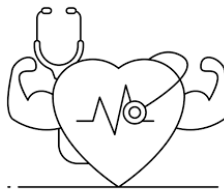
The Paralympic Games are a major international multi-sport event involving athletes with a range of physical disabilities, including impaired muscle power, impaired passive range of movement, limb deficiency, leg length difference, short stature, hypertonia, ataxia, athetosis, vision impairment, and intellectual impairment.

Dr. Ludwig Guttmann known as father of paralympic organized the first official Paralympic Games in Rome featuring 400 athletes from 23 countries.

The Paralympics have grown significantly over the years, now attracting thousands of athletes from over 100 countries. The Paralympic movement has played a vital role in challenging societal perceptions of disability and in promoting the rights and inclusion of people with disabilities worldwide

- I. What is the primary focus of the Paralympic Games?
 - A. To promote physical fitness among children
 - B. To involve athletes with a range of physical disabilities in competitive sports
 - C. To honor the history of the Olympic Games
 - D. To raise funds for sports organizations
- II. Who organized the first event that eventually led to the creation of the Paralympic Games?
 - A. Pierre de Coubertin
 - B. Dr. Ludwig Guttmann
 - C. Lord Zeus
 - D. Norabji Tata
- III. In which year were the first official Paralympic Games held?
 - A. 1948
 - B. 1952
 - C. 1960
 - D. 1964
- IV. Where were the first official Paralympic Games held?
 - A. Tokyo, Japan
 - B. London, United Kingdom
 - C. Rome, Italy
 - D. Sydney, Australia

Q33.



- I. What is the primary effect of exercise on cardio respiratory system. 1
 - A. Decreased heart rate
 - B. Increased stroke volume

- C. Decreased lung capacity
- D. Decreased blood pressure

II. What is stroke volume 1

- A. The volume of blood ejected by the heart per minute
- B. The volume of blood ejected by the heart per beat
- C. The volume of blood in the ventricles at the end of diastole
- D. The volume of blood pumped by the heart during exercise

III. Cardiac output is 1

- A. The volume of blood ejected by the heart per minute
- B. The volume of blood ejected by the heart per beat
- C. The volume of blood in the ventricles at the end of diastole
- D. The volume of blood pumped by the heart during exercise

IV. Blood pressure is 1

- A. The volume of blood ejected by the heart per minute
- B. The force exerted by blood against the walls of arteries
- C. The rate of blood flow through the veins
- D. The amount of oxygen carried by red blood cells

(Question for blind)

Ramesh is an athlete of XYZ school. He is use to do 100m event for his school. He used to do hard work throughout the year to get his best performance. One day he got injury in winter season due to improper warming-up. He has been given first -aid before sent to hospital.

I. Sprain is an injury of

- A. Ligament
- B. Muscle
- C. Bone
- D. Joint

II. In PRICE treatment I stands for

- A. Iceing
- B. Incline
- C. Incision
- D. Irritation

III. Abrasion is a

- A. Type of fracture
- B. Joint dislocation
- C. Soft tissue injury
- D. Internal injury

IV. Why warming up is necessary

- A. To avoid injuries
- B. To increase pulse rate
- C. To increase body temperature
- D. All the above

(SECTION E- Attempt any 3)

Q34. List down any four asanas used for prevention of Hypertension. Explain the procedure, benefits and contraindicate of any one of them with help of a stick diagram. 1+4

Q35. Discuss the purpose of Rikli & Jones fitness test and explain procedure of any two test batteries in detail. 5

Q36. Define strength and differentiate between Isometric, Iso-tonic and Iso-kinetic exercises. 1+4

Q37. What are the various types of friction? With the help of suitable example explain why friction is necessary in sports. 2+3